

# ANTENOR

## AUCTION



[antenor-auction.com](http://antenor-auction.com)

49 rue des Minimes  
1000 Brussels, BELGIUM

+32 (0) 2 898 09 50  
[info@antenor-auction.com](mailto:info@antenor-auction.com)





## NOTRE ÉQUIPE



**Olivia Roussev**  
Associate Director  
+ 32 (0) 495 74 63 62



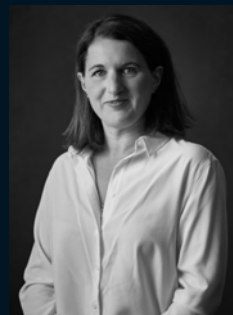
Alexis de **Limburg Stirum**  
Art Director  
+ 32 (0) 495 27 22 27



**Harold Lombard**  
Associate Director  
+ 32 (0) 497 71 77 07



**Philippe Moorkens**  
Chief Financial Officer



Charlotte de **la Brunetière**  
Operation coordinator  
+ 32 (0) 486 37 63 78



**Auriane Linker**  
Online Sales administrator  
+ 32 (0) 470 99 72 26



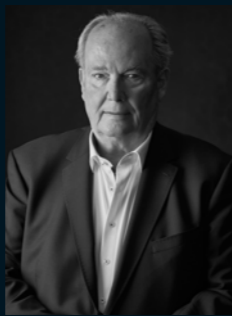
**Gilles Lorin**  
Photographer  
+ 49 (0) 160 127 34 48



**François Armand**  
Design & communication  
+ 32 (0) 493 330 340



**Ann Mathys**  
Consultant  
+ 32 (0) 495 37 26 60



**Walter Spruyt**  
Consultant  
+ 32 (0) 475 98 17 79

## NOS EXPERTS



**Benoît Bertrand**  
Haute Epoque  
+ 33 (0) 6 88 47 62 42



**Amélie Marcilhac**  
Art Deco  
+ 33 (0) 1 42 49 74 46



**Roland de Lathuy**  
Old Master pictures  
+ 32 (0) 477 41 98 12



**Laure Dorchy**  
Jewellery & Silver  
+ 32 (0) 475 94 29 27



**Christian d'Ansembourg**  
18<sup>th</sup> & 19<sup>th</sup> C. Furniture & Clocks  
+ 32 (0) 477 54 30 98

**Arnaud de Gouvion Saint-Cyr**  
Medals, orders, militaria, arms and armours  
+ 33 (0) 6 70 75 01 05

**Elodie Jeannest de Gyvès**  
Sculpture  
+ 33 (0) 6 83 59 98 40

**Aline Josserand-Conan**  
16<sup>th</sup> to 19<sup>th</sup> C. Ceramics  
+ 33 (0) 6 10 76 48 84



**Claudiu Vlad**  
Shipping  
+ 32 (0) 495 65 00 05





**PUBLIC AUCTION**

par le Ministère de l'étude LEROY & Associés  
Huissiers de justice à 1050 Bruxelles

**ANTENOR III**

**SALE**

12 December 2021 at 5pm

**VIEWING**

Friday 10 to Sunday 12 December 2021

at l'Ancienne Nonciature  
7 rue des Sablons, 1000 Brussels

info@antenor-auction.com | T. +32 (0) 2 898 09 50  
49 rue des Minimes, 1000 Brussels

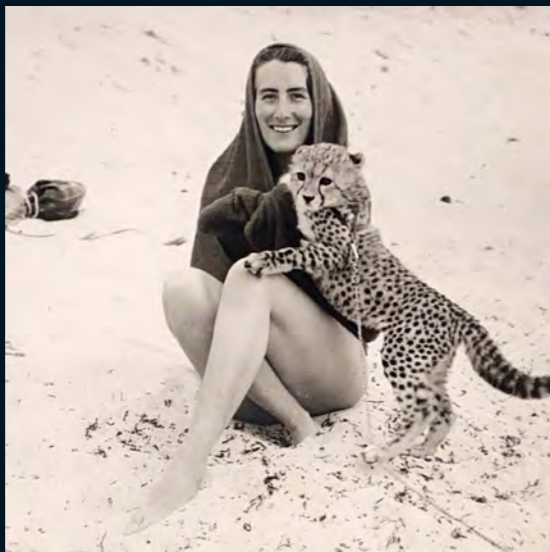


Lots

*The lots preceded by ♦ are composed of an endangered organic material. Their import may be subject to restrictions and require a CITES certificate to be obtained at the buyer's expense.*



## LOTS 1 - 150



### EMILE SENART

Born in the middle of the 19th Century, Emile Senart (1847-1928) was elected a member of the «Académie des inscriptions et belles-lettres» in 1882, president of the «Société asiatique» from 1908 to 1928 and founder of the «Association française des amis de l'Orient» in 1920.

Besides numerous epigraphic works, we owe him several translations in French of Buddhist and Hindu texts, including several Upanishad, that made him regarded as one of the great masters of Eastern studies. Travelling extensively to the East, his first trip took place from 1887 to 1890. From then on, he was behind all archaeological missions in India, Central Asia, China and Afghanistan, which took place in the first quarter of the 20th Century. Not only did he inspire, organise and subsidise them, he followed them in spirit, with a passionate interest that never ceased. Like most of his peers such as Emile Guimet and Henri Cernuschi, he brought back home many works of art to build up his extensive collection.

Having no children, his treasures were bequeathed to French Institutions and to his great niece.

### COMTESSE DE B.



Born in a family of industrialists and renowned collectors, great niece of Emile Senart, the French indologist and sinologist, Comtesse de B. began her childhood with an early exposure to the world's cultural treasures, developing a passionate devotion for paintings and works of art. Among her many distinctive qualities, her intelligence, encyclopedic knowledge and exquisite imagination stood out.

Never inhibited by self doubt or convention, she followed the prompting of her heart, pursuing what made it beat faster, may it be art, literature or poetry: when she published a book of poems, she received an award from the Académie Française. More recently, she started writing a novel.

Things that were obvious to her often eluded the cognitive abilities of lesser mortals.

About art, she used to say: 'Beauty is not what everyone buys, it is usually what many ignore. A work of art with a museographic quality is not enough to make it an object of desire. You need a projection, an identification. You have to be able to intuitively discover a part of yourself in this object. There is no collection without an intimate connection. This is where narcissism comes in'. She was indeed in total harmony with the works of art and decor surrounding her, as if they were revealing her true personality.





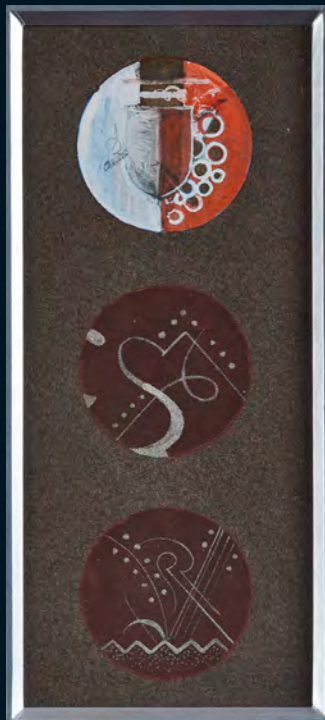
**1**  
**GUSTAVE MIKLOS (1888-1967)**  
*Paysage exotique*  
 Gouache and watercolor on paper  
 Signed lower left  
 H: 28 x W: 17 cm

€800-1.000



**2**  
**GUSTAVE MIKLOS (1888-1967)**  
*Paysage exotique aux barques*  
 Gouache and watercolor on paper  
 Signed lower left  
 H: 28 x W: 17 cm

€800-1.000



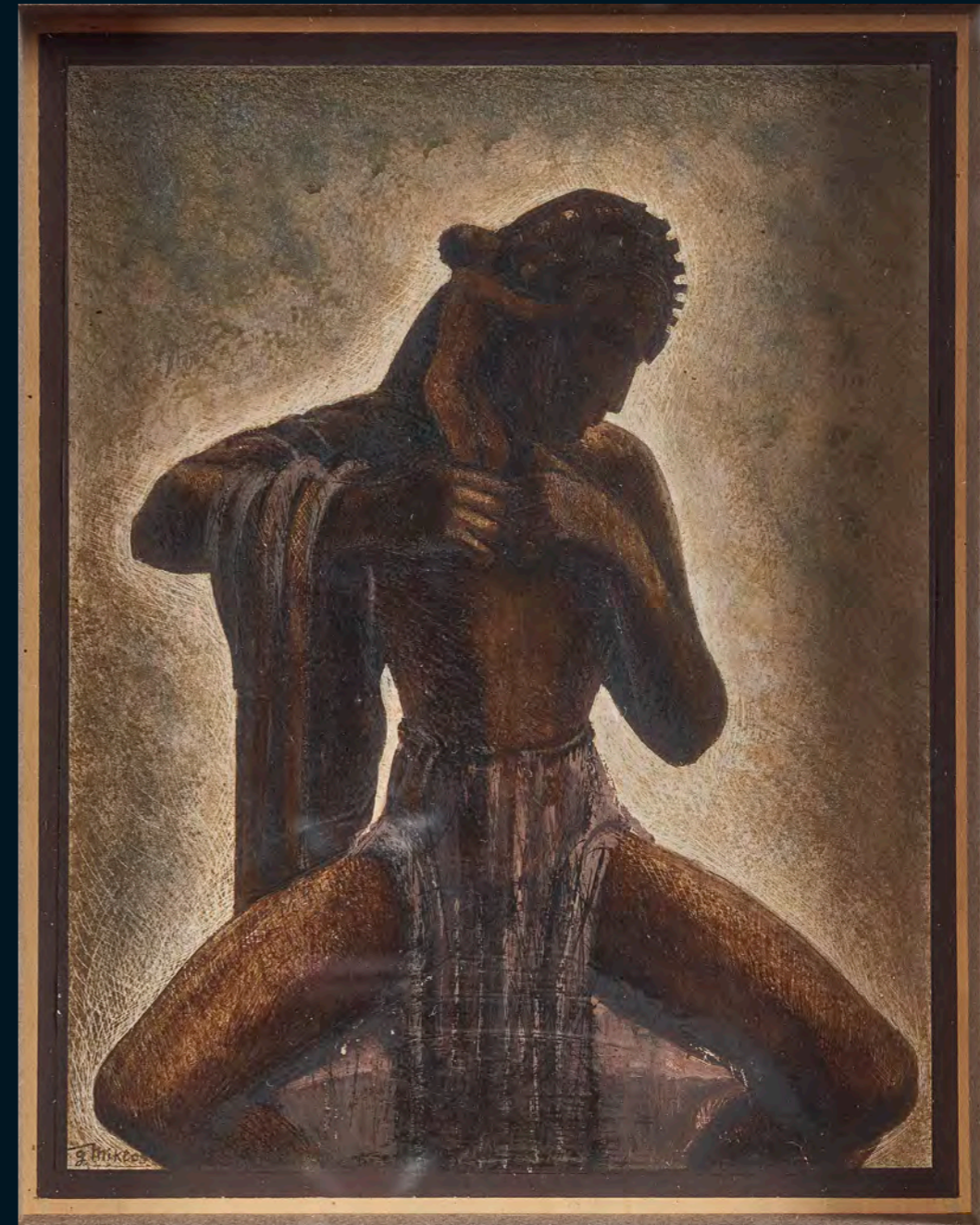
**3**  
**GUSTAVE MIKLOS (1888-1967)**  
*Trois projets de médaillons circulaires*  
 Gouache and watercolor on paper  
 H: 22,5 x W: 9,5 cm

€600-800



**4**  
**GUSTAVE MIKLOS (1888-1967)**  
*Bords de mer*  
 Gouache and watercolor on paper  
 Signed lower left  
 H: 25 x W: 8,5 cm

€800-1.200



**5**  
**GUSTAVE MIKLOS (1888-1967)**  
*L'indigène*, circa 1928

Oil on paper  
 Signed lower left  
 H: 26,5 x W: 21 cm

This is a preparatory work for the sculpture "*L'homme et son destin*" made in 1928 for the first proof and in 1929 for the second.

€6.000-8.000

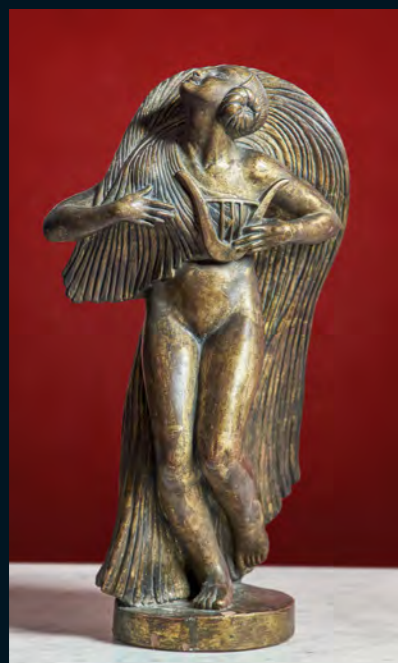
Lot 1-5 will be featured in the forthcoming Miklos Catalogue Raisonné by the Comité Miklos



**6**  
**BOLESLAS BIEGAS (1877-1954)**

*Danse de la rosée*  
Oil on panel  
H: 42 x W: 52 cm

€3.000-5.000



**7**  
**ERNESTO DO CANTO E MAIA, CANTO DE MAYA (1890-1981)**

*Alegoria de la musica*  
Gilt terracotta  
H: 50 x W: 28 x D: 17 cm

€2.500-4.000

**8**  
**FERDINAND PARPAN (1902-2004)**

Bronze elephant, 1953  
Signed, monogrammed, dated and numbered 2/8  
Bronzsmith stamp Blanchet  
H: 48 cm

€8.000-12.000







**9**  
**ROYAL MANUFACTURE OF SEVRES**

18th century, around 1762 - 1765  
Soft paste porcelain, with a celestial blue background, decorated in polychromy with an exceptional bouquet of flowers accompanied by an insect and a spider, in a wide cartel delimited by a beautiful chiseled gilding frame, nets, fins, flowers and fan-shaped patterns with spandrels, detached on the celestial blue background.  
H: 18.8 x W: 17 cm  
In a metal frame

€4.000-6.000



**10**  
**ATTRIBUTED TO ADRIEN DÉSIÉRIÉ ETIENNE**  
**DRIAN (1885-1961)**  
Term of the parterre de Latone in the park of Versailles  
Eglomisé  
H: 27 x W: 17,5 cm

€400-600



**11**  
**ADRIEN DÉSIÉRIÉ ETIENNE**  
**KNOWN AS DRIAN (1885-1961)**  
Vase of Peace in the Park of Versailles, 1947  
Eglomisé, signed lower left  
H: 27,5 x W: 22 cm  
Provenance: Galerie Charpentier, 1947  
€800-1.000



**12**  
**LEONARD TSUGUHARU FOUJITA (1886-1968) & SPERANZA CALO-SEAILLES (1885-1949)**

*Chat*  
 Rectangular panel in white lap on red and black ochre background  
 Unique piece  
 H: 39,5 x W: 60 cm

The design is by Tsugouharu Foujita, better known as Foujita, and the panel was produced in "lap" by Spéranza Calo-Séailles in the laboratory of the company "LAP" in Antony. Foujita and Spéranza Calo-Séailles met around 1914 and began working on Lap designs in 1924. They then transposed into "lap" various compositions on the theme of children and the animals dear to the artist. Foujita regularly participated in Lap exhibitions organised in the family estate of Calo-Séailles. He is undoubtedly the artist whose collaboration with Spéranza Calo-Séailles was the most fruitful.

Literature :

Le lap, Antony, imp Desgranchamps, Paris , 1928, illustrated p. 17.  
 Sylvie BUISSON, Leonard-Tsugouharu Foujita, Courbevoie, 2001, work recorded under No 28.200, and illustrated p. 273.

€4.000-6.000



**13**  
**19TH CENTURY SCHOOL**

*Moïse sauvé des eaux*  
 A large enamel plaque  
 H: 55 x W: 74 cm

€2.000-3.000



**14**  
**SERAPHIM DENECHÉAU (1831-1912)**  
*Diana lying on a crescent moon*  
 Bronze with dark patina signed on the base, on a  
 veined red marble base  
 H: 75 cm (H: 100 cm with the base)

€8.000-12.000

**15**  
**A PAIR OF GILT-BRONZE AND MAHOGANY  
 CONSOLE TABLES**  
 Empire  
 With white marble tops  
 H: 89 x W: 121 x D: 51 cm

€2.000-3.000



15



◆ 16  
**PHILIPPE WOLFERS (1858-1929)**

*Ingénue*, circa 1916/1917  
Ivory sculpture, signed on the base  
H: 21 cm (without the marble base)

Literature: W. Adriaenssens, Raf Steel, *La dynastie Wolfers, de l'Art Nouveau à l'Art Déco*, Pandora, 2006, P. 406

€5.000-8.000





**17**  
**GEORGES BEL**  
*Serge Lifar, Après-midi d'un faune*  
 Terracotta sculpture, signed and titled  
 H: 30 x W: 45 x D: 13 cm

€300-500

**18**  
**GEORGES BEL**  
*Serge Lifar, Après-midi d'un faune, 1935*  
 Patinated bronze sculpture, signed and titled and located in Paris  
 H: 30 x W: 45 x D: 13 cm

€800-1.200

**19**  
**SAMSON MANUFACTURE**  
 Paris, 19th century  
 In the taste of China, baluster vase in turquoise blue enamelled sandstone, with long flared neck decorated with flowers and foliage in relief, decorated with chrysanthemum flowers in fahua style, marked  
 H: 26,5cm

€400-600



**20**  
**FOLLOWER OF PIERRE MIGNARD (1612-1695)**  
*Presumed portraits of members of the Begasson de La Lardais family*  
 Oil on canvas  
 Inscribed with the name of the sitter on a label at the back  
 H: 72 x L: 56 cm

€2.000-3.000

**21**  
**A ROYAL MARRIAGE SOUVENIR PORCELAIN PLATE**  
 By Wood & Son, 1981  
 Commemorating the wedding of H.R.H The Prince of Wales (Charles) and Lady Diana Spencer, St. Paul's Cathedral 29 July 1981  
 D: 25,4 cm

€10-20





**22**  
**BEN (BORN IN 1935)**  
«Je peut tout me permettre»  
Cotton print  
H: 45,5 x W: 50,5 cm

€200-300

**23**  
**A PAIR OF PARCEL-GUILT DEEP-BUTTONED «CHAUFFEUSES»**  
Napoléon III  
H: 68 x W: 53 x D: 48 cm

€400-600

◆ **24**  
**AN EBONY & IVORY MARQUETRY CABINET**  
Attributed to Giovanni Battista Gatti (1816-1889), Florence, second half of the 19th century  
The ivory engraved with profiles and rich decoration, the pediment with the monogram of the Senart family  
H: 208 x W: 100 x D: 58 cm

€1.400-1.800





**25**  
**FRENCH SCHOOL, 17TH CENTURY**  
*The Mystical Marriage of Saint Catherine*  
Gouache on parchment  
H: 25 x L: 30 cm

€2.000-3.000

**26**  
**FRENCH SCHOOL, LATE 19TH CENTURY**  
*Portrait of vestal*  
Oil on canvas  
H: 23 x W: 34 cm

€80-120



**29**  
**CHRIST**  
Middle Rhine, 16th century  
Carved wood  
H: 37 cm

€300-500



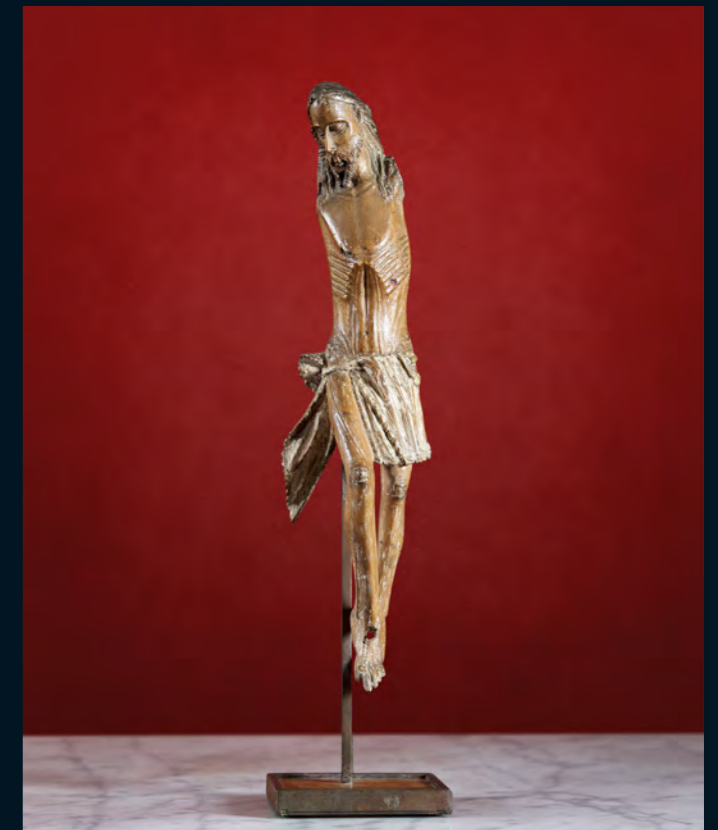
**27**  
**HENRI MARIE CAMILLE BOUVET**  
**(1859-1945)**  
*Study for The procession of the panatheneaea*  
Oil on cardboard  
H: 19 x W: 28 cm

€300-500



**28**  
**JEAN CLAUDE NOVARO (1943-2014)**  
A pair of gold incrustated blue glass vases  
Signed to the reverse and dated 2000  
H: 21 x D: 23 cm

€300-500



**30**  
**PORCELAINE DE PARIS**  
Late 19th century  
Important square flower box with gold decoration  
on a black background, Chinese characters in a  
landscape on two sides and cranes on the other two  
sides  
H: 34 x W: 23,5 x D: 23,5 cm

€600-800



**31**  
**A PAIR OF PARCEL-GILT CELADON LACQUERED MARQUISES**  
Stamped Paul François Jean (Maître en 1784), Louis XVI  
H: 90 x W: 85 x D: 72 cm  
Literature : Kjellberg, *Le mobilier français du 18<sup>ème</sup> siècle*, 2002, p. 484

€1.000-1.500

**32**  
**A PAIR OF GLAZED EARTHENWARE ELEPHANT STOOLS**  
H: 59 x W: 52 x D: 25 cm  
A similar pair was sold : Collection du Baron de Redé  
provenant de l'Hôtel Lambert, Sotheby's Paris, 16 March 2005

€1.000-1.500

31

32

32

31





**33**  
**FILARET IVANOVICH PAKOUN (1912-2002)**

*The evening*  
Oil on panel  
H: 33,5 x W: 42,8 cm

€500-700



**34**  
**ITALIAN SCHOOL, 19TH CENTURY**

*View of the gardens from the loggia of Villa Bombrini in Genoa*  
Oil on canvas  
H: 31 x W: 43 cm

€400-600



**35**  
**LATE 19TH CENTURY SCHOOL**

*The passage of the oasis near the pyramids in Cairo*  
Oil on panel, monogrammed AP lower left  
H: 21 x W: 25,5 cm  
In a Badir & Son frame, Cairo

€1.500-2.000



**36**  
**RUDOLF ERNST (1854-1932)**

*Study of a young girl*  
Oil on panel  
H: 46 x W: 33 cm  
Provenance: the artist's studio

€1.500-2.000



◆ **37**  
**A RARE EBONY AND IVORY CABINET ON STAND**

Attributed to Giovanni Battista Gatti (1816-1889) and his entourage, Florence, second half of the 19th century

The ivory richly engraved, the central marquetry shows the bath of Diana with her hunting attributes, then pediment with the Medici coat-of-arms, opening with many doors and drawers

Commissioned by a member of the Senart family  
H: 250 x W: 180 x D: 63 cm

€9.000-12.000



**38**  
**AMADEO GENARELLI (1881-1943)**  
*Gypsy*  
Carved Carrara marble, signed on the base  
H: 35 cm

€700-900



**39**  
**JULIEN DILLENS (1849-1904)**  
*Buste d'enfant*  
Carrara marble sculpture, signed  
H: 34 cm (without the pedestal)

€800-1.200



**40**  
**FERDINAND DESNOS (1901-1958)**  
*Lune d'automne*  
Oil on canvas, signed and titled on the back  
H: 27 x L: 35,5 cm

€300-500

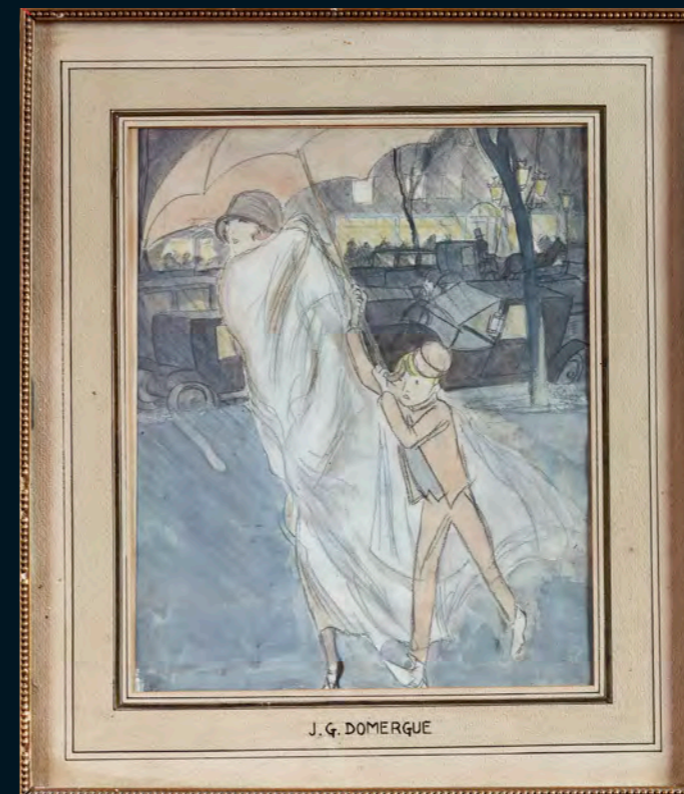
**41**  
**JEROME MESNAGER (1061)**  
*Nuit*, 1996  
Mixed media on paper mounted on panel  
Signed and dated lower right  
H: 65 x W: 50 cm

€600-800



**42**  
**JEAN-GABRIEL DOMERGUE (1889-1962)**  
*Elegante au groom*  
Pencil, gouache and watercolor on paper  
H: 28,5 x W: 23 cm

€600-800





**43**  
**MICAO KONO (1876-1954)**  
*The white roses*  
 Oil on canvas, signed lower right  
 H: 38 x W: 61 cm

€500-700



**44**  
**ITALO GIORDANI (1882-1960)**  
*Boat at dusk*  
 Oil on panel signed lower right  
 H: 45 x W: 53 cm

€200-300



**45**  
**FERNAND LUCIEN BIVEL (1888-1950)**  
*Dream of the ocean*  
 Gouache on paper, signed lower right  
 H: 22 x W: 28 cm

€300-500



**46**  
**A GILT AND PATINATED BRONZE MANTEL  
 CLOCK OF GENERAL HANNIBAL**

Restoration period  
 H: 58 x W: 38,5 x D: 14 cm

€1.000-1.500



**47**  
**ZLOTAS**

A copper and brass vase inset with an antique silver  
 coin depicting Athena, signed to the base  
 H: 16,8 cm

€150-200

48

**20TH CENTURY SCHOOL IN THE STYLE OF ZAO WOU-KI**

*Lady B's dream*  
Oil on board  
H: 180 x W: 180 cm

€8.000-12.000

49

**A RED AND BLACK LACQUERED CHEST-OF-DRAWERS**

Mid 20th century  
With two doors centered by four drawers, with a marble top  
H: 80 x W: 145 x D: 51 cm

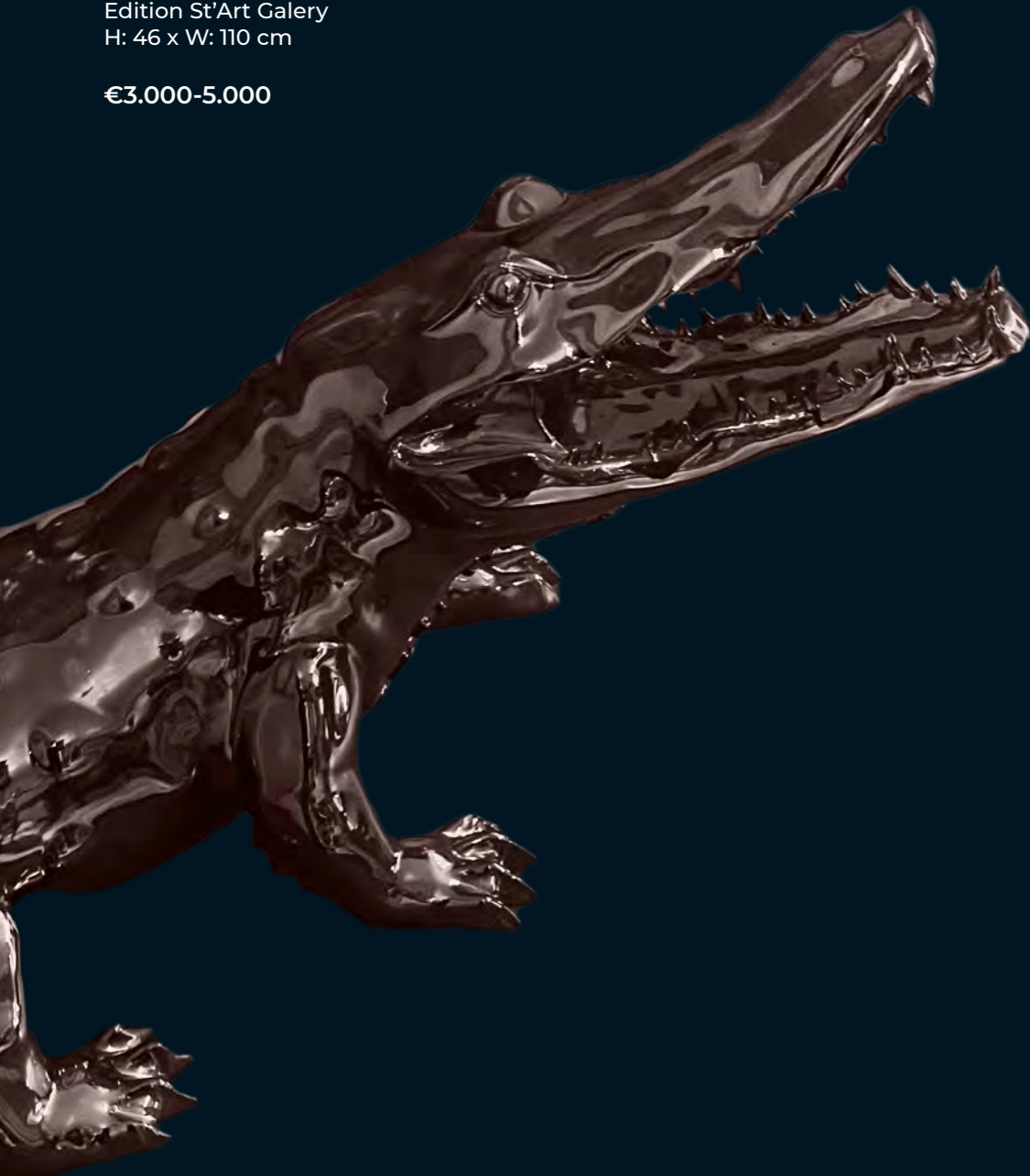
€800-1.200

50

**RICHARD ORLINSKY (BORN IN 1966)**

*Born wild, 2006*  
Chrome metal  
Signed, dated, titled and numbered 29/30 under the tail  
Edition St'Art Galery  
H: 46 x W: 110 cm

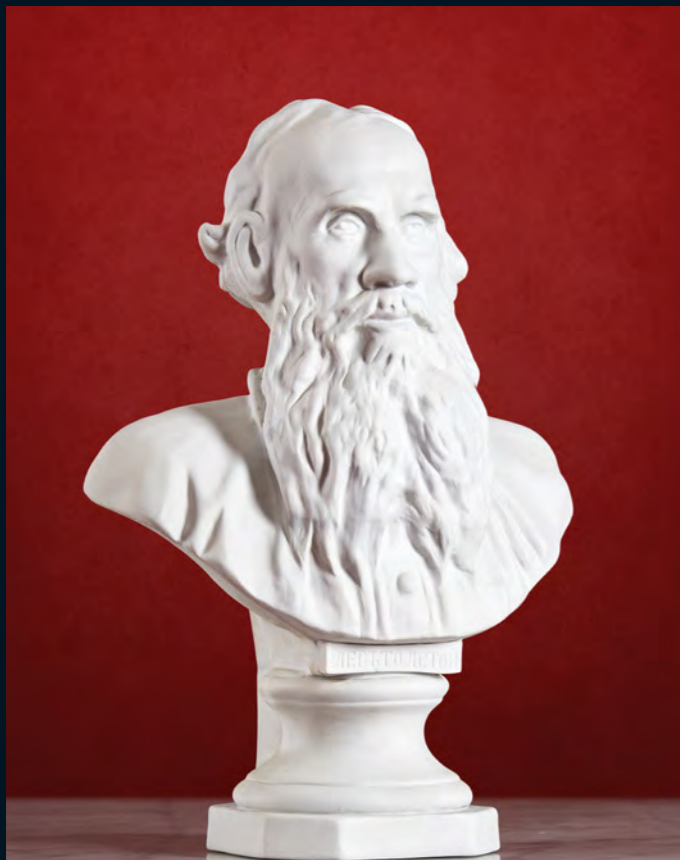
€3.000-5.000





**51**  
**GERMANY - THURINGIA**  
 Second half 19th century  
 Large parrot in enamelled white porcelain, perched on a branch, the terrace decorated with flowers in relief.  
 Mark in blue under the base.  
 H: 43,5 cm

€300-500



**52**  
**RUSSIAN SCHOOL**  
 Bust of Tolstoy  
 In biscuit porcelain  
 H: 38 cm

€100-150

**53**  
**A SHIWAN-WARE FOO DOG**  
 China, Qing dynasty, late 19th century  
 The stoneware figure decorated in green and brown glaze, depicting an eccentric female foo dog with her left paw resting on her cub (minor damages)  
 H: 44 x W: 51 x D: 23 cm

€700-900



**54**  
**GERMANY - SAXONY**  
 A pair of white porcelain swans  
 Blue crossed swords  
 H: 16 cm

€80-120

**55**  
**A MASSIVE HIRADO WARE PLANTER**  
 Japan, Meiji Period (1868-1912)  
 Of circular form with inverted lip, decorated in underglaze blue with brown highlights, depicting the Japanese phoenix hoho-bird amongst clouds and blooms of paulownias and chrysanthemums  
 H: 35 x W: 54 cm

€2.000-3.000





56

**A VERY LARGE FAMILLE NOIRE JAR AND COVER**

China, Qing dynasty, 19th century

Of baluster form, decorated with phoenixes and other birds in a garden of blossoming flowers growing from rockworks, the cover similarly decorated and topped with a finial modelled in the form of a foo dog

H: 94 cm

€20.000-30.000



**57**  
**AN EXPORT LACQUERED EIGHT-PANEL SCREEN**

China, Late 19th century

Decorated on one side with various figures in activity amongst pagodas in a natural landscape bordered by a large floral frieze, the other side with long-tailed birds amongst bamboo and camelias growing from rockwork, again bordered by a large frieze of scrolling foliage (damages)

H: 210 x W: 55 cm (each panel)

€700-900

**58**  
**JEAN-BAPTISTE CARPEAUX (1827-1875)**

*Pourquoi naître esclave (n°1)*, model created in 1868

Bust in patinated terracotta

Titled «POURQUOI NAITRE ESCLAVE» on the front, signed «JBt Carpeaux» and dated «1875

With the stamp of the workshop with the imperial eagle

H: 63 cm

Provenance: Aimée de Heeren collection

€2.500-3.500





**59**  
**A PAIR OF ARMORIAL SAMSON PORCELAIN**  
**JARDINIÈRES**

19th century  
Of hexagonal shape, with the French royal coat-of-arms  
H: 28 x W: 31 cm

€600-800



**60**  
**A GILT-BRONZE CLOCK DEPICTING**  
**«LOVE IN A CAGE»**

Circa 1825  
H: 39 x W: 18,5 x D: 11 cm

€400-600

◆ **61**  
**FRENCH OFFICER'S HELMET OF DRAGONS MODEL 1845**

Crest with gadroons, with rain screen and marmoset, bomb, plumet holder and gilded brass ring. Fur headband  
Gilded brass «8» rings on the chinstrap and on the rim of the crest. Leather chinstraps (accident)  
Black mane and marmoset puff  
Inner headpiece decorated with small iron in gold. Visor and nape of the neck lined with leather  
B.E. (Little wear)  
H: 32 cm

€2.000-3.000







**62**  
**JACQUES GRUBER (1870-1936)**

*Bridge in the Vosges*  
Rectangular wall panel in purple and white multilayer glass with acid-engraved decoration in reserve  
Signed lower right  
H: 21 x W: 50 cm

Literature: Collectif, *Jacques Gruber et l'Art Nouveau, un parcours décoratif*, Gallimard & Musée de l'École de Nancy, Paris, 2011, variant of our model referenced under n°27 and reproduced p. 159.

€500-700



**63**  
**CLEMENT MASSIER (1857-1933) GOLFE JUAN**

Ceramic vase with tubular body on spherical base, decorated with grapefruits and vines in purple enamels entirely enhanced with gilding in relief on a turquoise blue golden background  
Signed and located Golfe Juan.  
H: 18,5 cm

€200-300

**64**  
**BRONZE RAT**

Japan, Meiji, 19th/20th century  
H: 8 x W: 16,5 cm

€200-300

◆ **65**  
**CHESS TABLE**

India, 19th century  
Inlaid with ivory and ebony  
W: 60,5 cm

€200-300



◆ **66**  
**AN ART DECO SHAGREEN CIGARETTE BOX**

France, circa 1940  
H: 6 x W: 20,5 x D: 12 cm

€600-800

**67**  
**ALBERT MARIONNET (1852-1910)**

Bronze dish decorated with thistles  
Signed  
H: 30 x W: 40,5 cm

€100-150





**68**  
**GEORGES JEANCLOS (1933-1997)**

*Embarquement pour Cythère*, 1999  
Patinated bronze, signed dated and numbered 5/8 on the base  
H: 26 x W: 50 x D: 22 cm

€8.000-12.000



**69**  
**MIGUEL BERROCAL (1933-2006)**  
*Citius Altius Fortius, Opus 315 - 1986*  
 Bronze, specially created by the artist for the International Olympic Committee  
 Signed and numbered 4/250  
 H: 12,8 cm

€600-800

**70**  
**NAM GREB POUR FRANZ XAVER BERGMAN (1861-1936)**

*Oriental dancer and her little valet*  
 Vienna bronze with polychrome patina  
 Signed, foundry stamp with a "B" in an urn  
 H: 19 x W: 7 x D: 7 cm (bronze)

€1.000-1.500



**71**  
**A SILVERED BRONZE CENTERPIECE**  
 Decorated with sea horses and shells  
 H: 37 x D: 43 cm

€300-500



**72**  
**ARTHUR JACQUES LEDUC (1848-1918)**

*Boïard par Vermout, 1873*  
 Bronze sculpture, signed and dated on the base: Boïard by Vermout / born in 1870 appt to Mr Delamarre / trained by L.R. Carter Mounted by W. Carver / Winner in 1873 / Les prix de Guiche, Seine, Poule des Produits Derby français / Grand prix de Paris (100,000) / Rallye papier / 27 July 1880 Lamballe  
 H: 45 x W: 49 cm

€5.000-7.000



**73**  
**A GOLD-MOUNTED RUBY AND ROCK  
CRYSTAL ELEPHANT BONBONNIERE**  
H: 25 cm

€3.000-5.000



**74**  
**A CARVED AGATE CUP**  
Depicting a turrtle and dolphins in the Suzhou school  
style  
H: 13,3 cm

€200-300



**75**  
**A GOLD-MOUNTED RED JASPER  
HIPPOPOTAMUS**  
The eyes set with sapphires  
H: 5 x W: 10 x D: 4,8 cm

€1.200-1.500



**76**

**ROUEN**

18th century

A large earthenware lion, sitting on a blue ground rectangular base, the head turned with a yellow and manganese mane, a blue, yellow and red mouth, his right leg holding a shield decorated with a landscape in shades of blue

H: 68 x W: 55 x D: 26 cm

€3.000-5.000



**77**

**A LOUIS XVI MARQUISE**

Circle of C. Chevigny (Master in 1768)

Covered with honey coloured leather

H: 91 x W: 90 x D: 70 cm

Literature: P. Kjellberg, *Le mobilier français du 18ème siècle*, 2002, p. 198, ill.A.

€600-800

**78**

**HYACINTHE RIGAUD (1659-1743) AND WORKSHOP**

*Portrait of a Nobleman, probably the marquis de la Martinière, bust length in a purple and gold robe*

Oil on canvas

H: 80 x L: 64 cm

Provenance: By descent from Jean de la Martinière (born in 1664) to Comtesse de B.

€12.000-16.000

This unrecorded and newly discovered version of the portrait of a gentleman identified as possibly the marquis de la Martinière is known through four other versions. Like ours, the best versions show a lozenge shaped scar in the middle of the forehead.

As our version was owned by descendants of Jean de La Martinière ° 1646, this would give more certainty as to the traditional identification of the sitter.

The posture, the garment and the wig are typical of Rigaud around 1710-1720 when the artist was at the height of his art.





**79**  
**CIRCLE OF PHILIPPE DE CHAMPAIGNE**  
**(1602-1674)**  
*Portrait of a Gentleman*  
Oil on panel  
H: 17,5 x L: 13 cm

€1.000-1.500



**80**  
**FOLLOWER OF BARTOLOMEO SCHEDONI**  
**(1578-1615) 18TH CENTURY**  
*The Lamentation*  
Oil on canvas laid down on panel  
H: 15,5 x L: 19,5 cm

€800-1.200



**81**  
**PAUL BAUDRY (1828-1886)**  
*The conversation*  
Oil on canvas  
Monogrammed lower right  
H: 26,5 x W: 15 cm

€300-500



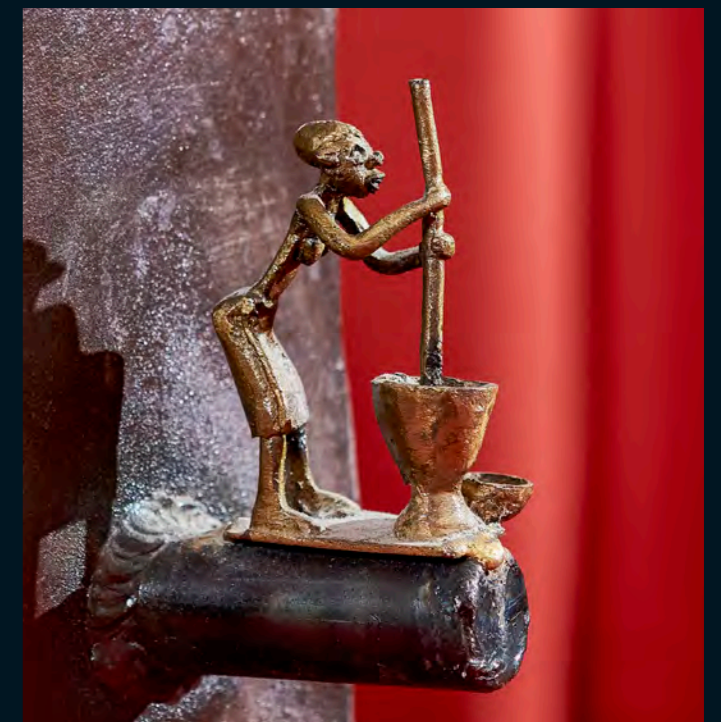
**82**  
**FELIX TOBEEN (1880-1938)**  
*Pins au crépuscule, 1903*  
Oil on canvas  
Signed and dated lower right  
H: 148 x W: 78 cm

€3.000-5.000



**83**  
**A 20TH CENTURY SALON SUITE**  
Set of four "barrel" armchairs in sheet metal, each decorated with three different figures sculpted in bronze  
H: 85 x D: 73 cm

€800-1.200





**84**  
**KOSTIA (BORN IN 1974)**

*Fetiches*, 2019  
Pair of gueridons, zebrawood top, red and black lacquered wood base, gilt brass circle at the base  
H: 49 x W: 61,2 cm

€7.000-10.000

Another pair of *Fetiches* gueridons has been commissioned by the Mobilier National



**85**  
**FRENCH SCHOOL OF THE 18TH CENTURY**

Louis de France called the Grand Dauphin (1661-1711), after a model by François Girardon (1628-1715)  
The Queen of France, Marie Thérèse of Austria (1638-1683) after a model by François Girardon (1628-1715) and Martin Desjardins 1637-1694

A pair of bronze busts with brown patina  
H: 50 cm in total  
Marble pedestal - H: 13 cm

Literature:

- François Girardon et Martin Desjardins, Marie Thérèse d'Autriche, vers 1685-90 buste en marbre, H. 83 cm musée des Beaux-Arts de Troyes, inv. 834.8.
- François Girardon, Le Grand Dauphin, vers 1692, buste en bronze, H. 43,3 cm, collection particulière
- École française de la fin du XVIIIème siècle d'après un modèle de François Girardon, le Grand Dauphin et Marie-Thérèse, reine de France, H. : 51 et 49,6 cm, ca. 1680, The Walter Art Museum, n°inv. 27413 et 27414
- XVIIIème siècle d'après un modèle de François Girardon, le Grand Dauphin et Marie-Thérèse, reine de France, paire de bronzes H. 41,5 cm, New-York, The Frick Collection, inv.1915.2.64 et 1915.2.65.

€8.000-12.000

This pair of bronze busts of the Grand Dauphin and his mother, Queen Maria Theresa of Austria, testifies of the grand style of Louis XIV's century and the glorification of the royal family. François Girardon, the King's sculptor, knew how to honor the art of portraiture by freeing it from its traditional funerary context. He promoted this art, essential to the commemoration of sovereigns and great dignitaries, worthy of praise and immortality. He depicts here a rather flattering image of Louis de France, son of Louis XIV and heir to the throne. He particularly cared for the armor and high wig, diverting attention from the young man's face, attenuating his goiter with the presence of a thin scarf tied around his neck. The original bronze cast, now kept in a private collection, is believed to have been made around 1692. It is depicted on plate 2 of the engraving of the *Gallerie de Girardon*, which was published in 1709. The work was originally placed in pendant with a bronze bust of King Louis XIV, probably to highlight the idea of dynastic continuity. In addition to this original model by Girardon, two other bronze examples of the Grand Dauphin are known. Like our bust, the versions of the Walter Art Museum and the Frick Collection are paired with a bust of Queen Maria Theresa of Austria, mother of the Dauphin.

The model for this rather hieratic portrait of the wife of Louis XIV was commissioned by the Marquis de Villacerf, Edouard Colbert, to adorn his private home. A painting depicting the *Jardin d'Eau* of Chateau de Villacerf features in this sale. As requested by Colbert, the original marble bust was executed jointly by Girardon and Desjardins around 1690. At that time, Colbert had not yet received the office of Inspector General of the King's Buildings (1695), but the bust of the late Queen, paired with the one of Louis XIV (both preserved in the Troyes Museum), testifies of the loyalty of this servant who exercised the office of First Master of the Queen's Household. It is therefore not an official portrait of the Queen, but a private and posthumous tribute of a great servant to the royal couple. The inventory after the death of the artist Girardon in 1711 attests of the presence in the sculptor's collections of a plaster representing Marie-Thérèse, as well as, as we have seen, the bronze bust of the Dauphin. It is not known under what circumstances the busts of the Grand Dauphin and his mother were paired. Other examples of marble busts of Louis de France and his mother were made by Coysevox for the Chateau de Meudon, now in the Palace de Aranjuez collections. However, another hypothesis can be put forward: the creator of the 18th century pair may have been misled by Girardon's after-death's inventory which misunderstood the identity of the sitter: indeed in no. 215 of the document, the Grand Dauphin is mistaken for his father Louis XIV. With this mistake, the primitive idea of pairing the two figures could have been to represent the royal couple, Louis XIV and Marie-Thérèse. Finally, the casting of the only three currently known pairs, ours and those of Baltimore and New York, had to be made after 1718, when the original bronze of the Grand Dauphin was sold.







**86**  
**AN EXCEPTIONAL SET OF LOUIS XVI GILT-BRONZE MOUNTED**  
**MAHOGANY SEAT FURNITURE**

The model attributed to David Roentgen (1743-1807) and most probably executed by Johhan Gottlieb Frost (1746-1814), the gilt-bronzes mounts attributed to Francois Rémond (1747-1812), circa 1785

Comprising 2 armchairs and 3 chairs, each with a caduceus-shaped back

Armchairs: H: 90 x W: 60 x D: 56 cm

Chairs: H: 90 x W: 52 x D: 50 cm

€30.000-50.000

Provenance : Chrétien Guillaume de Lamoignon de Malesherbes (1721-1794)



Literature:

- J.-M. Greber, *Abraham und David Roentgen*, Möbel für Europa, Starnberg, 1980, p. 255.
- D. Fabian, *Roentgel Mödel aus Neuwied*, Bad Neustadt, 1986, p. 259, fig. 618.
- D. Ledoux - Lebard, *Le Mobilier Français du 19<sup>ème</sup> siècle*, Paris, 1989, p. 156 et 160.
- D. Fabian, *Abraham und David Roentgen*, Munich, 1992, p. 45, fig. 91.
- G. Janneau, *Les Sièges*, Paris, 1993, p. 250, n° 253.
- C. Baulez, *David Roentgen et François Rémond, une collaboration majeure dans l'histoire du mobilier européen*, in *L'Estampille - L'Objet d'Art*, septembre 1996, n° 305, p. 111.
- Cat., Steinitz, 2004, pp. 260-263.
- Cat. exp., W. Koeppel et al, *Extravagant inventions : the princely furniture of the Roentgens*, The Metropolitan Museum of Art, Oct. 2012 - Janv. 2013, p. 170.
- Cat. exp., *18<sup>ème</sup> Aux Sources du Design, chefs d'œuvres du mobilier, 1650-1790*, Versailles, 2014, p. 261, n° 84.





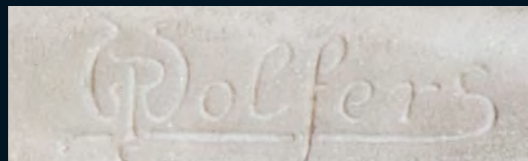
**87**  
**PHILIPPE WOLFERS (1858-1929)**

*Le Cycle des Heures*, circa 1905  
Carrara marble, signed  
H: 50 x W: 162 x D: 27 cm

Provenance: Galerie Philippe Denys, Brussels, circa 1996

Literature: W. Adriaenssens, Raf Steel, *The Wolfers Dynasty, Art Nouveau à l'Art Déco*, Pandora, 2006, P. 389

€100.000-200.000



"Le cycle des heures", as it was exhibited around 1912 on the mantelpiece of the Wolfers Frères reception room in rue d'Arenberg





88



**88**  
**A STUCCO HEAD OF BUDDHA**  
India, Gandhara, 3rd / 4th century  
H: 15 cm

€400-600

**89**  
**A SANDSTONE BUST OF SHIVA**  
India, 10th / 11th century  
H: 12,5 cm

€300-500



89

90



**90**  
**A LIMESTONE HEAD OF BUDDHA**  
Khmer, Angkor period, 13th century  
H: 22 cm

€400-600

91

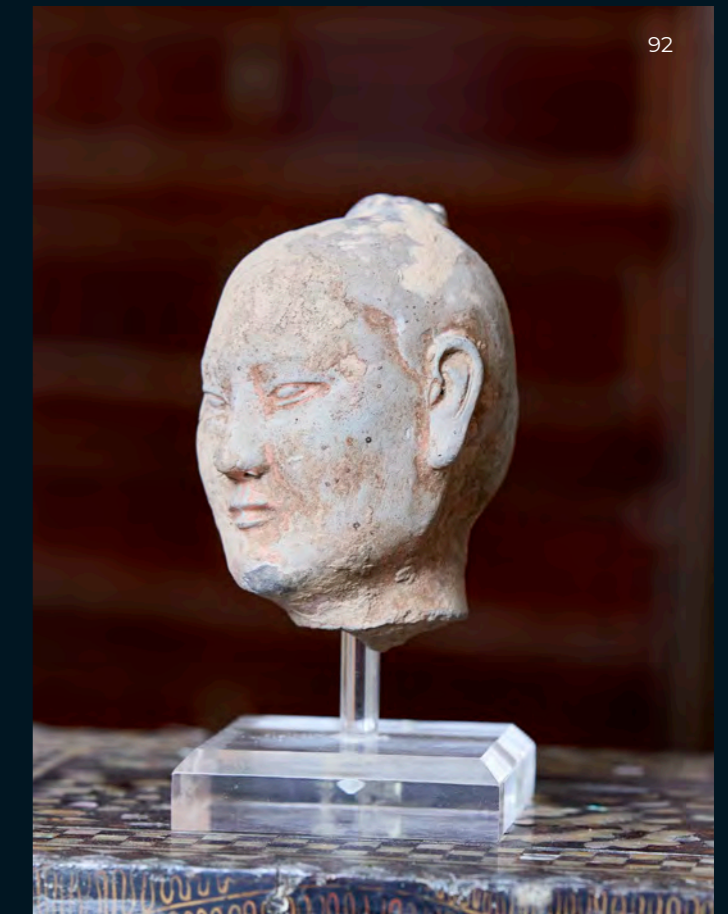


**91**  
**A BRONZE HEAD OF BUDDHA**  
Thailand, Ayutthaya, 16th / 17th century  
H: 10 cm

€200-300

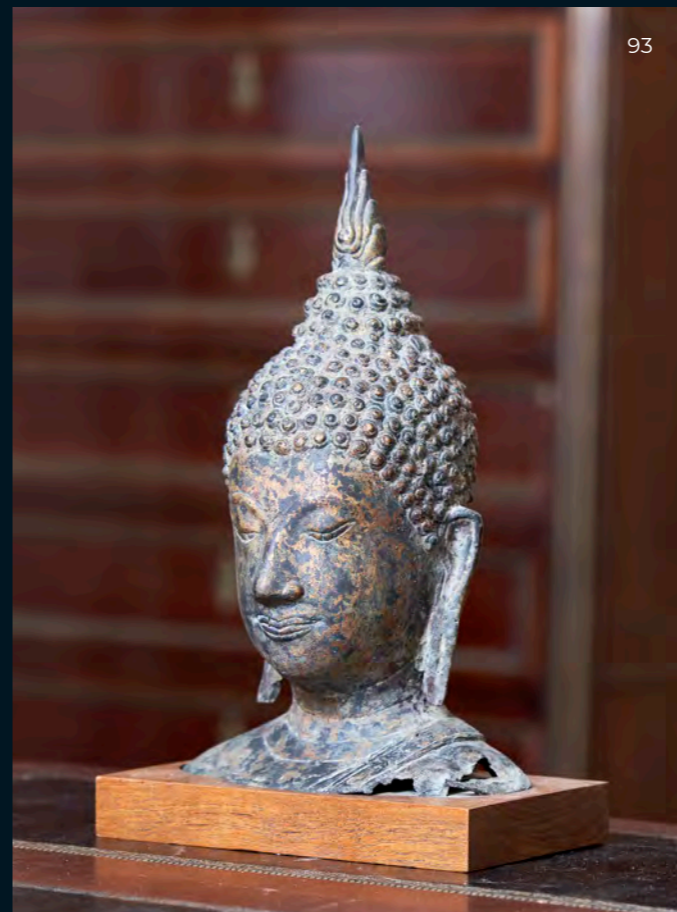
**92**  
**A POTTERY HEAD OF A "STICK FIGURE"**  
China, Han dynasty, 206 BC – 220 AD  
H: 12,5 cm

€200-300



92

93



**93**  
**A BRONZE HEAD OF BUDDHA**  
Thailand, Ayutthaya, 16th / 17th century  
H: 30 cm

€300-500



**94**  
**A MARBLE HEAD OF BUDDHA**  
China, Northern Wei dynasty, 386-534  
H: 24 x W: 25 cm  
  
€3.000-5.000



**95**  
**A PORTABLE EXPORT LACQUER CABINET**  
Japan, Momoyama period (1573-1615)  
Decorated in gold lacquer and mother-of-pearl inlay on a black ground, the rectangular cabinet with a front drop-panel revealing eight drawers  
H: 26,5 x W: 41,5 x D: 29,5 cm  
  
€800-1.200

**96**  
**AN EXPORT SILVER BOX AND COVER**  
China, Qing dynasty, late 19th century  
Of cylindrical form with flush-fitted lid, the box and cover similarly decorated in the repoussé technique with dragons chasing flaming pearls amongst clouds on a hammered ground, the base with and maker's mark and inscribed CW  
H: 10,5 x W: 9 cm  
  
€600-800



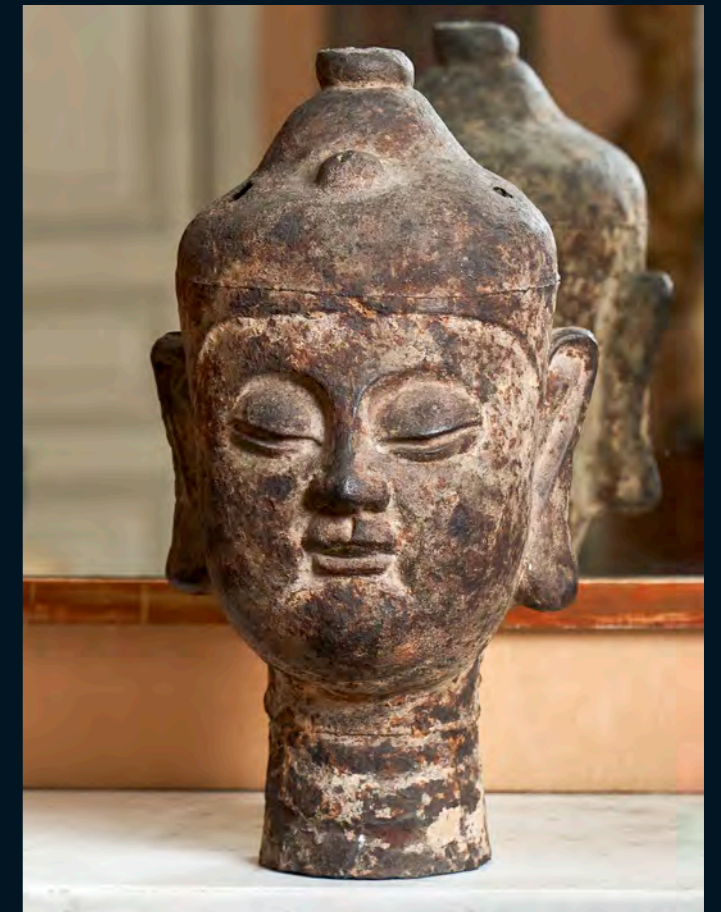
**97**  
**A CARVED WOOD HEAD OF GUANYIN**  
China, Ming dynasty style  
The contemplative face with the hair pulled to form a topknot behind an elaborate crown, traces of pigments  
H: 56 cm

€1.200-1.800



**99**  
**A CAST-IRON HEAD OF A BODHISATTVA**  
China, Yuan to Ming dynasty, circa 14th century  
Cast in the round, the contemplative face with the hair pulled to form a topknot  
H: 50 cm

€3.000-5.000



**98**  
**A GILT AND POLYCHROME CARVED WOOD FIGURE OF GUANYIN**  
China, Ming dynasty (1368-1644)  
Seated in the vajrasana with the hands lowered on the thighs in dhyanamudra, together with a later jichimu base  
H: 32,5 x W: 18 x D: 13,5 cm

€800-1.200



**100**  
**A RED SANDSTONE FRAGMENT OF A MAN AND WOMAN**  
India, Mathura, Kushan period, 3rd/4th century  
H: 25 x W: 22 cm

€1.000-1.500



101

**101  
A LARGE SANCAI GLAZE CERAMIC FIGURE  
OF GUANYIN**

China, Qing dynasty, 18th /19th century  
The Guanyin gracefully seated on a rock and gazing  
away, decorated with red, yellow and green glaze, the  
skin and hair unglazed.  
H: 53cm

€1.200-1.800

**102  
AN INLAID LACQUER LOW TABLE**

China, Ming dynasty (1368-1644)  
Of rectangular form decorated with mother-of-pearl  
inlay depicting butterflies, sprays of lotus, camellias and  
pomegranates  
H: 14 x W: 52 x D: 29 cm

€800-1.200

103



**103  
A PORTABLE EXPORT LACQUER CABINET**

Japan, Momoyama period (1573-1615)  
Decorated in gold lacquer and mother-of-pearl inlay  
on a black ground, the rectangular cabinet with a front  
drop-panel revealing eight drawers  
H: 24 x W: 33,5 x D: 23 cm

€800-1.200

◆ **104  
AN IVORY FIGURE OF GUANYIN**

China, Qing dynasty, 18th century  
H: 25 cm

€700-900

◆ **105  
AN IVORY FIGURE OF SHOULAO**

China, late Ming to early Qing dynasty, 17th century  
H: 25.5 cm

€700-900



104

105

102





**106**

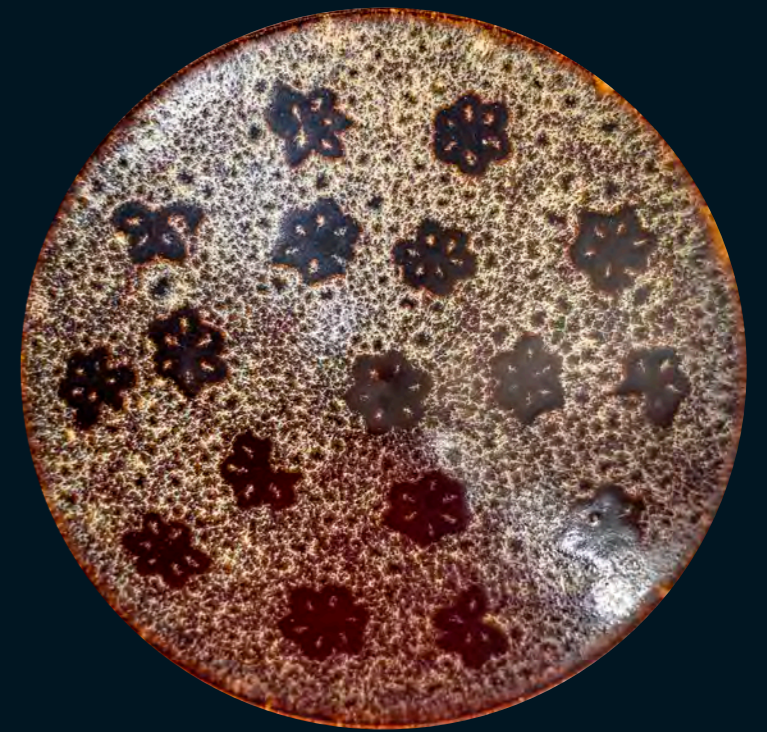
**A JIZHOU WARE PAPER-CUT RESIST BOWL**

China, Southern Song dynasty (1127-1279)

Of conical form, the interior decorated in the resist technique with scattered plum blossoms on a mottled ground, the reverse with a thick glaze imitating turtle shell

D: 15 x H: 4 cm

€4.000-6.000



**107**

**A CARVED DINGYAO DISH**

China, Northern Song dynasty (960-1127)

The very thin porcelain dish covered with an ivory white glaze, decorated with an incised lotus and leaves

D: 21,5 x H: 3,3 cm

€4.000-6.000



**108**  
**A LARGE ARCHAISTIC BRONZE JAR**  
China, late Ming dynasty, 17th century  
Of baluster form with a tall flaring neck and flanked on the shoulder with two taotie-mask ring handles, the body with a central band with lappets running above and below and decorated with taotie-masks, kuyi dragons and other archaic patterns, the inside of the neck with an inscription (corrosion and old repairs)  
H: 48,5 cm

€2.000-3.000



**109**  
**AN ORMOLU-MOUNTED MAHOGANY CABINET**  
Attributed to Gervais Maximilien Durand (1839-1920), late 19th century  
Opening with two doors and five drawers  
H: 215 x W: 104 x D: 43 cm

€800-1.200

**110**  
**A GILT BRONZE OF MAHAKALA**  
Sino-Tibetan, Qing dynasty, 18th century  
The ferocious figure striding in alidhasana and standing on two figures laying on a lotus base  
H: 18 x W: 14 x D: 7,5 cm

€10.000-15.000



111

**A BRONZE FIGURE OF KRISHNA**

Southern India, 15th/16th century

Standing crossed legged, the God raising his hands as if he was playing the flute, eyes inlaid in red glass

H: 28,5 cm

€4.000-6.000



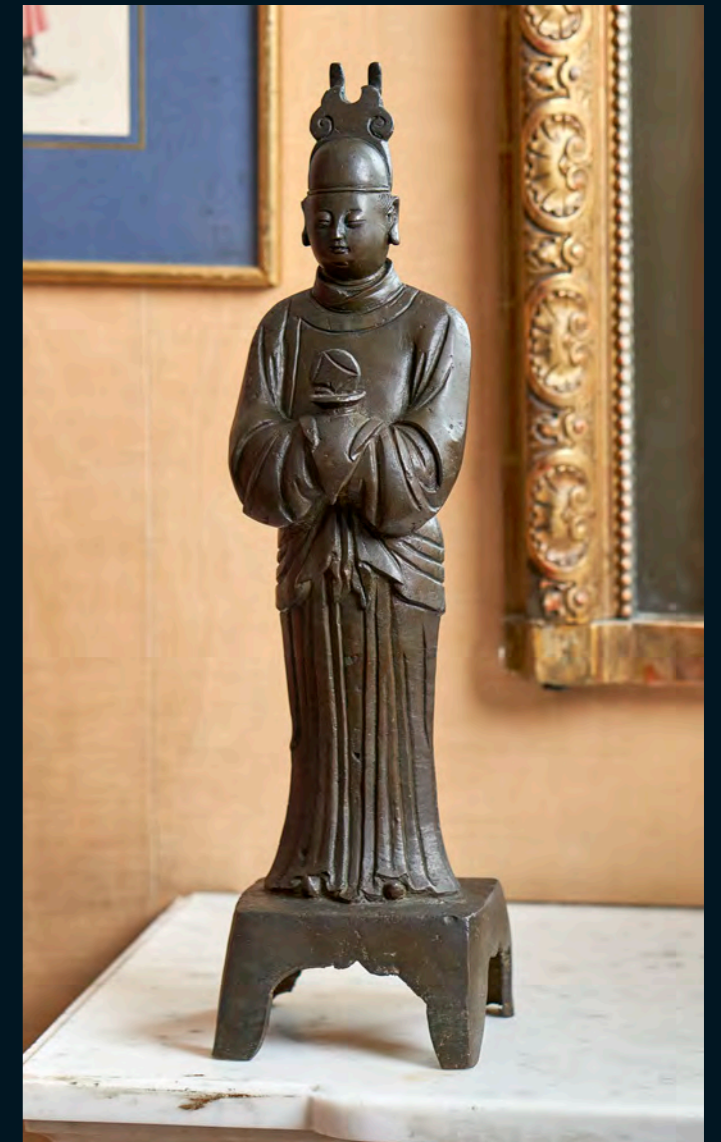
112

**A BRONZE STANDING FIGURE OF A TAOIST DIGNITARY**

China, late Ming dynasty (1368-1644)

H: 46 cm

€800-1.200



113

**A SANCAI-GLAZED PILLOW**

China, Liao to Jin dynasty (11th / 13th century)

Of lobbed-form decorated in orange and green with a dragon on creamy-white ground

H: 10,5 x W: 25 x D: 23 cm

€800-1.200



**114**  
**A LOUIS XV GILTWOOD MIRROR**

Provence, 18th century  
 H: 186 x W: 88 cm

€1.200-1.500

**115**  
**A SET OF FIVE COROMANDEL LACQUER PANELS**

China, Qing dynasty (1644-1911)  
 H: 24,5 x W: 34,5 cm

€200-300

**116**  
**A GILT AND POLYCHROME STUCCO FIGURE OF A MONK**

China, Ming dynasty (1368-1644) or earlier  
 H: 24 cm

€300-500



**117**  
**A GILT-BRONZE LOUIS XVI CLOCK**

Model by Robert Osmond, 19th century  
 With revolving dial  
 H: 44 x W: 16 x D: 16 cm

Literature: P. Kjellberg, *Encyclopedie de la pendule française*, 1997, p. 284 ill.

€800-1.200

**118**  
**A GILT AND POLYCHROME STUCCO BUDDHIST FIGURE**

China, Ming dynasty (1368-1644) or earlier  
 H: 38.5 cm

€500-700





119

**119  
A SANCAI-GLAZED STONEWARE TILE OF A  
BODHISATVA**

China, Wanli period (1572-1620)  
Carved with a Bodhisattva gracefully seated on stylized  
rockworks, the lower right inscribed Wanli and dated  
H: 40 x L: 38 cm

€1.500-2.000



**120  
A PAIR OF CLOISONNÉ ENAMEL CRANES**

China, Qing dynasty, 19th century  
The bronze cranes decorated with partial cloisonné  
inlay, standing on a mythological dragon-tortoise  
known as bixi  
H: 25 and 34 cm

€600-800



**121  
A LARGE BRONZE FIGURE OF SENJU  
KANNON**

Japan, Meiji period (1603-1868)  
The Thousand-Armed Goddess of Mercy standing on a  
lotus base with two sets of hands held against the body  
and holding a pearl, traces of gilding  
H: 70,5 cm

€700-900



122

**122  
A PAIR OF FRAMED HANDSCROLLS**

Japan, Edo Period (1603-1868)  
Each European frames comprising six cut fragments from a handscroll [emakimono] depicting the Oeyama Monogatari, a Medieval Japanese tale of the fearless warrior Minamoto Yorimitsu (948-1021) fighting the demon Shuten Doji who kidnapped and devoured maidens from Kyoto  
Each vignette H: 19 x L: 35 cm  
Total frame H : 141 x W: 53 cm

€600-900



123

**123  
A CHINESE ANCESTOR'S PORTRAIT**

China, Qing dynasty, late 19th / early 20th century  
Cut scroll mounted and framed, ink, color on paper, possibly depicting the Dowager Empress Cixi  
H: 154 x L: 57 cm

€400-600



122





124

125



126

**124**  
**A GILT, BROWN AND BLACK LACQUERED**  
**WOOD BUDDHIST SHRINE, BUTSUDAN**

Japan, Meiji Period (1868-1912)  
 The sober brown and black folding doors revealing a lavish interior with a carved gilt altar sitting on top of two drawers decorated with floral patterns, the interior of the doors fitted with gilt-lattice on the left side, and a kneeling figure beneath a pine tree on the right side, the bottom of the shrine fitted with another two drawers and sliding doors similarly decorated  
 H: 124,5 x W: 54 x D: 48 cm

€2.000-3.000

**125**  
**A JAPANNED DRAWERED CHEST**

England, 19th century  
 H: 90 x W: 96 cm

€300-500

**126**  
**A PAIR OF SIX-PANEL SCREEN, BYOBU**

Japan, Meiji Period (1868-1912)  
 Ink and polychrome pigments on paper with lacquered wood edges, the screen decorated with cranes in a natural landscape with peonies growing from rockworks at the foot of large pine tree, bamboo and a water stream in the background  
 Each screen H: 167 x W: 380 x cm

€600-900



126





**127**  
**A PAIR OF LARGE CIZHOU WARE STORAGE JARS**

China, Ming dynasty, 16th/17th century  
H: 53 and 52 cm

€800-1.200



**130**  
**A PAIR OF INLAID BRONZE STIRRUPS, ABUMI**

Japan, Edo period, 18th / 19th century  
A pair of bronze stirrups, inlaid in gold with flowering vines, the inside of the footbed in black lacquer  
H: 26 x W: 31 cm

€700-1.000

**128**  
**A LARGE CIZHOU WARE STORAGE JAR**

China, Ming dynasty, 16th/17th century  
H: 66 cm

€500-800



**131**  
**A BLUE AND WHITE JAR**

China, Qing dynasty, 19th century  
Of baluster form, the jar freely painted with a qilin, a legendary hooved chimerical creature, the tall neck with decorated with a band of lappets. Repairs  
H: 30 cm

€300-400



**129**  
**TWO LARGE CIZHOU WARE STORAGE JARS**

China, Ming dynasty, 16th/17th century  
H: 53 and 51 cm

€600-800



**132**  
**A WUCAI DISH**

China, Shunzi Period (1644-1661)  
Decorated in iron-red, green, yellow and aubergine enamels, with a central medallion depicting peony and chrysanthemum blossoms on a diaper-ground, encircled with further stylised floral décor  
D: 32 cm

€800-1.200

**133**  
**A LARGE MING ROOF TILE**

China, Ming dynasty (1368-1644)  
Partially glazed with green and yellow enamels, the tile modelled in the form of a demon riding on the back of a dragon  
H: 49 x W: 69 x D: 14 cm

€1.000-1.500



**134**  
**A PAIR OF EMPRESS DOWAGER STYLE DRAGON JARS AND COVERS**

China, Qing dynasty, 19th century  
Of baluster form decorated with a dragon and sprays of blossoming flowers on a yellow ground, within two bands of stylised floral motifs, the cover similarly decorated  
H: 62 cm

€1.500-2.000

For a single example but on a turquoise background, see Christie's Interiors sale 5901, March 3rd 2009, lot 169



**135**  
**TWO LACQUERED AND GILT WOOD BUDDHIST DEITIES**

Japan, Edo period (1603-1868)  
Both figures similarly decorated in various colors and gilt on lacquered wood, one figure with red skin tones holding a lotus in its left hand, the other figure of white skin tones with the fingers joined to hold lost attributes, old collector's label on the back  
H: 63 x W: 32 x D: 24 cm

€700-900

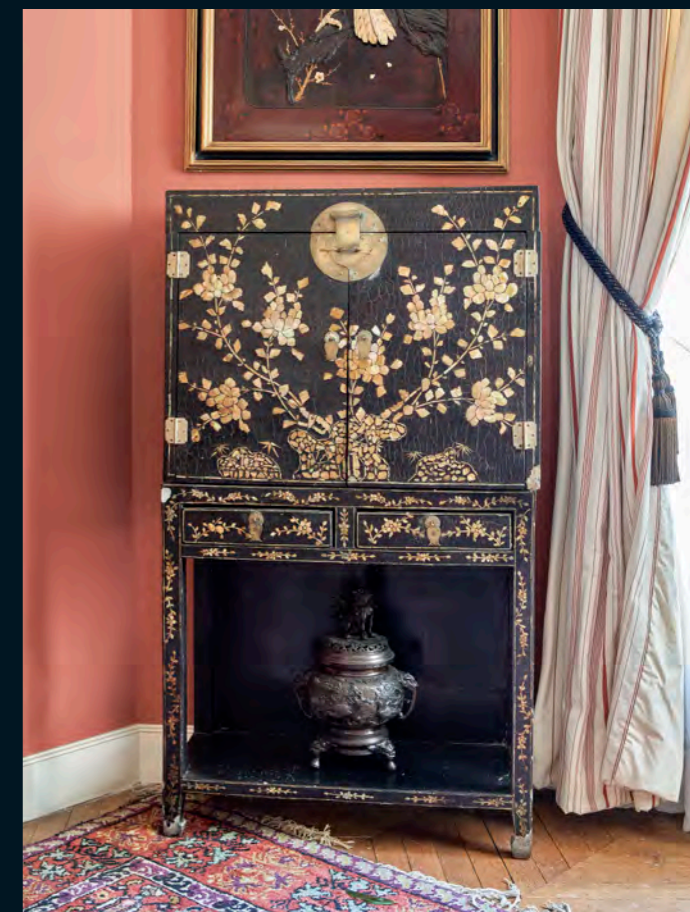




**136**  
**A PAIR OF LARGE MOTHER-OF-PEARL  
INLAID LACQUERED CABINETS**  
China, Ming dynasty (1368-1644)  
Comprising a large upper chest with two doors added  
later, on a lower open-section with two upper drawers,  
both cabinets similarly decorated with large sections of  
mother-of-pearl on a thick and cracked black lacquer  
ground with sprays of peonies growing from rockworks  
H: 152 x W: 86 x D: 36 cm

€20.000-30000

A very similar single cabinet was sold at Christie's New York, *Auspicious Treasures for Scholars and Emperors: Selections from the Robert H. Blumenfeld Collection*, 22 march 2012, lot 1338, sold \$30.000





◆ 137  
**A PAIR OF IVORY INLAID LACQUERED  
 PANELS**

Japan, Meiji Period (1868-1912)  
 Each panel similarly decorated with inlays of ivory and wood on rosewood, one panel with an eagle perched on a flowering branch of plum, the other with an eagle perched on a flowering branch of cherry and preying on a sparrow, the border decorated in lacquer with cherry blossoms  
 H: 108 x W: 70 cm

€4.000-6.000

A single similar example sold at Christie's London, auction 5795, 18 November 2014, lot 127, sold £6.250



◆ 138  
**A PAIR OF IVORY INLAID LACQUERED  
 PANELS**

Japan, Meiji Period (1868-1912)  
 Each panel similarly decorated with inlays of ivory and wood on rosewood, one panel with an eagle perched on a flowering branch of cherry, looking down at sparrows on the other panel  
 H: 108 x W: 70 cm

€4.000-6.000

A single similar example sold at Christie's London, auction 5795, 18 November 2014, lot 127, sold £6.250





**139**  
**A LARGE AND IMPRESSIVE BUDDHIST PAINTING**

Japan, Edo period (1603-1868)  
Colored pigment and gold on a blue ground, the large painting representing Buddha standing amongst ten other divinities floating on clouds  
H: 164 x W: 104 cm

€6.000-8.000





141



**140**  
**LOUVARIS, GREEK SCHOOL**  
View of the Parthenon, before 1923  
Oil on canvas, signed lower left  
H: 126 x W: 181 cm

€5.000-7.000

This painting depicts the Parthenon before the restoration campaign started in 1923 by Balanos. The most significant change was the re-erection of most of the missing sections of the long colonnades, which had the effect of joining up the east and the west ends for the first time since the explosion of 1687

**141**  
**20TH CENTURY SCHOOL**  
Sculpture of a panther made of metal washers  
H: 60 x W: 175 x D: 30 cm

€600-800

**142**  
**CAST IRON CONSOLE TABLE**

Attributed to Maison Robert, late 19th early 20th century  
With marble top  
H: 94 x W: 171 x D: 55 cm

€600-800

**143**  
**PAIR OF BRONZE-PATINATED PLASTER MEDICIS VASES**

H: 51 x D: 41 cm

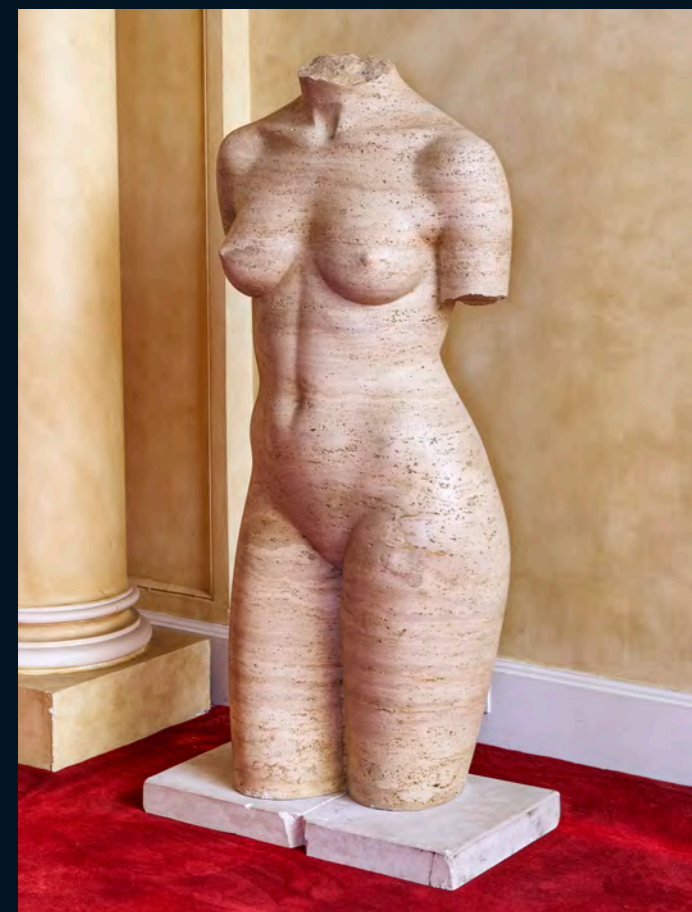
€500-700

**144**  
**PAIR OF MARBLE WALL COLUMNS**

19th century  
H: 127 x W: 35 x D: 29 cm

Provenance: Jules Emile Boivin, château de St Rémy-des-Landes, Clairefontaine-en-Yvelines near Rambouillet

€1.000-1.500



**145**  
**SALLET (20TH CENTURY SCHOOL)**

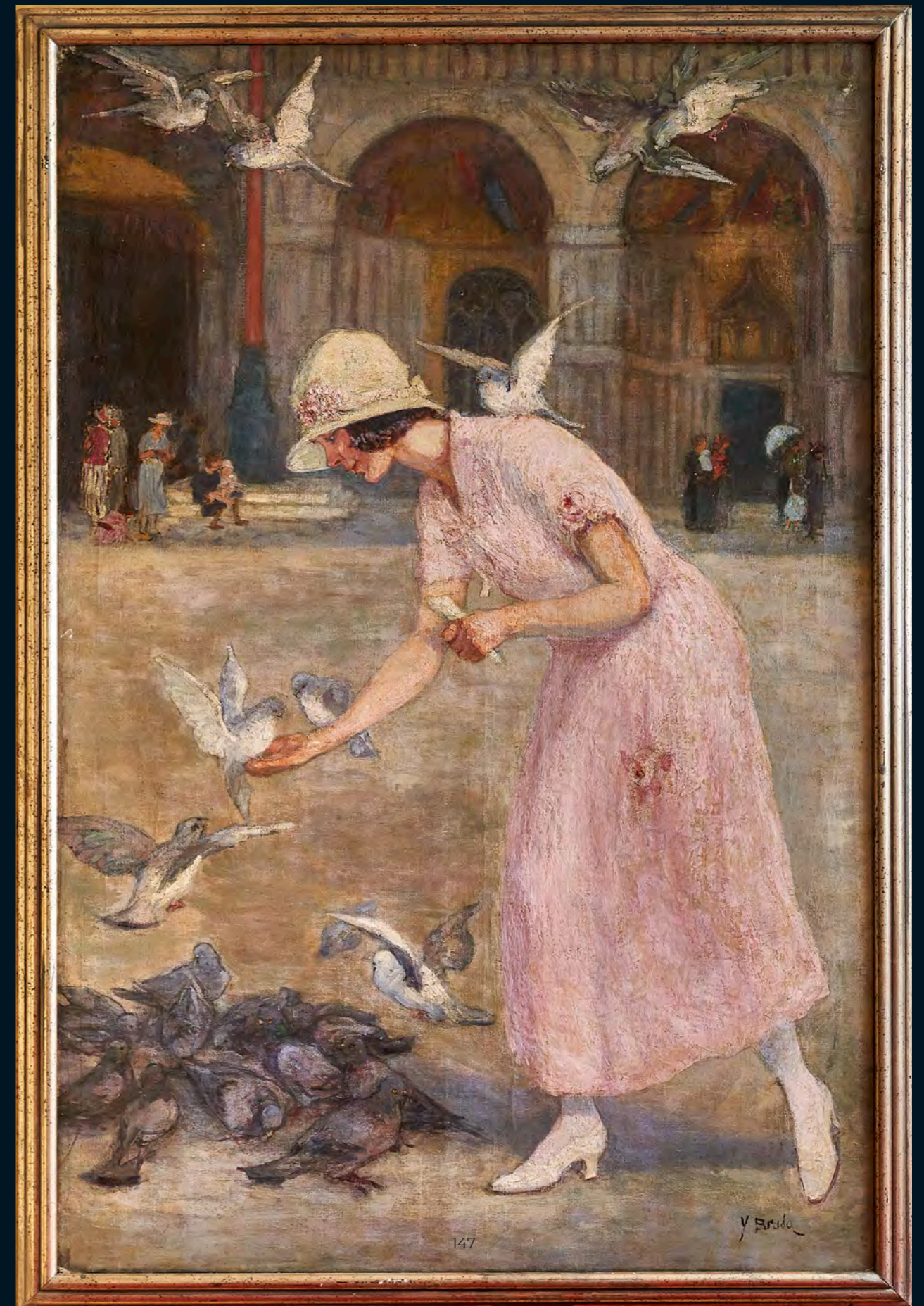
Woman's torso  
Carved in travertine stone  
Signed at the base  
H: 102 cm

€600-800

**146**  
**YVONNE BRUDO (EARLY 20TH CENTURY)**

*St. Mark's Square in Venice*  
Oil on canvas  
Signed lower right  
H: 193 x W: 128 cm

€1.000-1.500





**147**  
**A HARDSTONE TOUCAN**  
 20th century  
 On a patinated metal tree  
 H: 68 cm

€300-500

**148**  
**A PAIR OF LOUIS XV BEECHWOOD**  
**FAUTEUILS À LA REINE**  
 Stamped P. Remy (Master in 1750)  
 With needlework tapestries  
 H: 96 x W: 67 x D: 60 cm

€1.000-1.500

Literature: P. Kjellberg, *Le mobilier français du 18ème siècle*, 2002, p. 730 ill.A.



**149**  
**A LOUIS XV ORMOLU-MOUNTED**  
**MARQUETRY TABLE**

Opening with three drawers, the top drawer with a writing compartment  
 H: 68 x W: 41 x D: 32 cm

€500-800





**150**  
**CIRCLE OF ETIENNE ALLEGRAIN (1644-1736)**

Elegant figures and boats in front of the the Chateau d'Eau in the park of chateau de Villacerf  
 Oil on canvas  
 H: 85 x W: 130 cm

Provenance: Amédée Mégret de Devise (1800-1854), chateau de Salency (bombed in 1918), then by descent

Exhibited:

- Paris, Galerie Charpentier, *Jardin de France*, Summer 1963
- Paris, Galerie Charpentier, *Les Jardins et les Fleurs de Breughel à Bonnard*, 1965



This very rare depiction of a 17th century parc with its animated basin and water castle has been recently identified as the *chateau d'eau* in the parc of Villacerf (Champagne). Built by Louis le Vau in 1654, two years before Vaux-le-Vicomte, for Louis Hesselin *maitre d'hotel ordinaire du roi*, Villacerf (previously called Saint Sepulchre) was acquired around 1667 by Edouard Colbert, marquis de Villacerf, who commissioned Pierre Cottard to remodel the castle and its gardens. The elaborated water castle was build in the shape of a triumphal arch with a central portico decorated with elegant sculptures and fountains. Situated at the end of the longest basin of the parc, it concealed a large wheel and a pump used to supply water to all the fountains of the parc. The motto of Louis Hesselin, "Superest dum vita movetur" is placed above the central part and is flanked by sculpted coat-of-arms of Colbert. It was engraved by Lebouteux fils. The castle and parc were destroyed at the revolution.

€20.000-30.000



END OF THE COLLECTION OF COMTESSE DE B. AND HER FAMILY.  
 PART OF THE ITEMS ILLUSTRATED BUT NOT LISTED IN THE CATALOGUE WILL BE OFFERED  
 FOR SALE IN « COMTESSE DE B. ONLINE » IN 2022.



151

**LEON SPILLIAERT (1881-1946)**

*Portrait de Jules Barbey d'Aurevilly, 1903*

Pencil, charcoal, Indian ink and wash on paper  
Monogrammed and dated lower right "Bruxelles Fev  
03"

Titled on the back

H: 24 x W: 34 cm

This work is included in the artist's Catalogue Raisonné  
1 by Mrs Anne Adriaens-Pannier

€10.000-15.000

Provenance:

- Collection Monsieur Herman Goossens-Boerjan,  
Knokke

Exhibition:

- Ostende, PMMK, *Van Ensor tot Delvaux*, 05.10.1996-  
02.03.1997  
- Paris, Seita, *Spilliaert, Œuvres de jeunesse 1900-1918*,  
1997-1998, illustré dans le catalogue p.108  
- Ostende, PMMK, *Ensor en de Avant-Gardes aan zee*,  
30.09.2006-02.03.2007



**152**  
**LEON SPILLIAERT (1881-1946)**  
*Bord d'étang arboré, hiver, 1922*  
 Pastel and pencil on beige paper  
 Signed at the lower right  
 H: 24.7 x W: 48.3 cm

Provenance: Collection Struye de Swielande, Brussels

This work is included in the artist's Catalogue Raisonné  
 19 by Mrs Anne Adriaens-Pannier

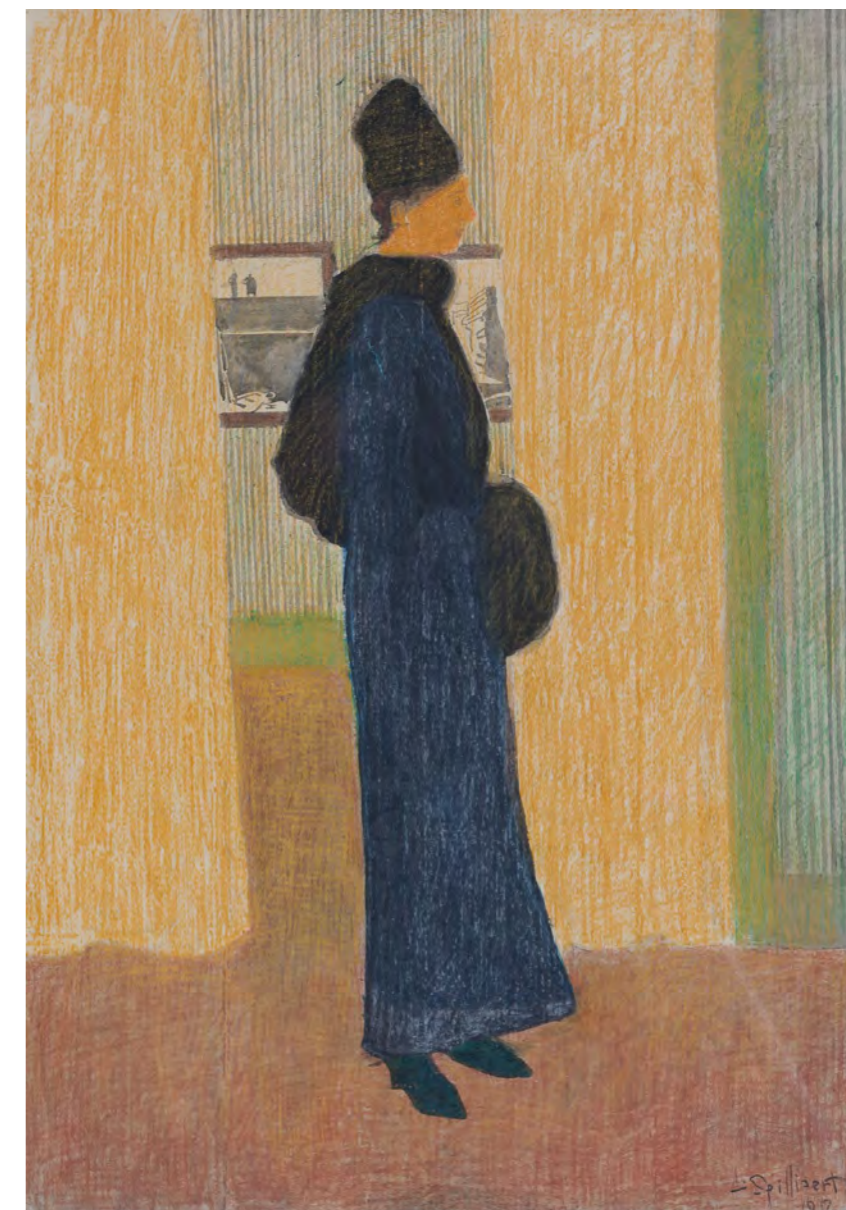
€6.000-8.000



**153**  
**LEON SPILLIAERT (1881-1946)**  
*Baigneuses dans le parc Marie-Henriette à Ostende, 1917*  
 Pencil and watercolor on paper  
 Signed at the lower left  
 H: 31.7 x W: 22.9 cm

This work is included in the artist's Catalogue Raisonné  
 22 by Mrs Anne Adriaens-Pannier

€5.000-7.000



**154**  
**LEON SPILLIAERT (1881-1946)**  
*Dame au manchon dans une exposition, 1912.*  
 Ink, colored pencil and pastel on paper.  
 H : 59 x L : 41 cm

Provenance:  
 - Maurice Keitelman Gallery, Brussels  
 - Collection E. Häberli, Bruxelles

Exhibition:  
 - Brussels, Royal Museums of Fine Arts of Belgium, *Hommage à Léon Spilliaert*, 28.04 - 25.06.1972, cat.57  
 - Brussels, Royal Museums of Fine Arts of Belgium, 1980

Literature:  
 - A. Adriaens-Pannier, *Léon Spilliaert*, Pandora, ill n°49, p.189

This work will be included in the Catalogue Raisonné of Dr. Anne Adriaens-Pannier.

€30.000-40.000



◆ 155  
**A SILVER-MOUNTED TORTOISE SHELL BOX**  
Mexico, 17th century  
Hinges decorated with leafy rinses, inside chain with bird-shaped fixation  
H: 7,5 x W: 16,5 x D: 11 cm

€2.000-3.000



156  
**A GREEN MARBLE MORTAR**  
Northern Italy, Possibly Venice, second half of the 16th century  
H: 26,5 cm

€2.000-3.000



◆ 157  
**AN EBONY AND IVORY MORTAR AND PESTLE**  
English colonies, 18th century  
H: 12 cm

€2.000-3.000



158  
**A LARGE YELLOW LINGBI SCHOLAR'S ROCK**  
China, dynasty (1644-1911) or later  
On a carved wood stand  
H: 60 cm

€3.000-5.000



**159**  
**AN ELM(?) MORTAR AND**  
**GUAIAC WOOD PESTLE**  
18th century  
H: 20 cm

€1.500-2.000

**160**  
**A GUAIAC WOOD MORTAR AND**  
**PESTLE**  
18th century  
H: 22 cm

€1.500-2.000

**161**  
**A LARGE GUAIAC WOOD**  
**MORTAR AND PESTLE**  
England, 17th century  
H: 35 x D: 29,5 cm

€3.500-5.000



**162**  
**A CARVED MARBLE KNIGHT'S HEAD**

Italy, 14th century  
With an emaciated face, furrowed eyebrows, straight nose, eyes open, the head is surrounded by a mesh guimpe and a helmet with pierced edges and covered. Possibly an element of a tomb  
H: 29 cm (without the pedestal)

€20.000-30.000



**163**

**MAXIME OLD (1910-1991)**

Model created in 1936

A rosewood dressing table with its silver bronze folding mirror and a translucent glass top, its stool with hot iron stamp

With the mirror: H: 120 x W: 165 x D: 60 cm

Top: H: 74 x W: 165 x D: 60 cm

Exhibited: Salon des Artistes Décorateurs (SAD) in Paris in 1948

Literature:

- Art et Décoration, n° 11, 1948, a similar model rep. p. 15

- Yves Badetz, Maxime Old, Architecte-Décorateur, Éditions Norma, Paris, 2000, modèle similaire rep. p. 51.

€3.000-5.000

**164**

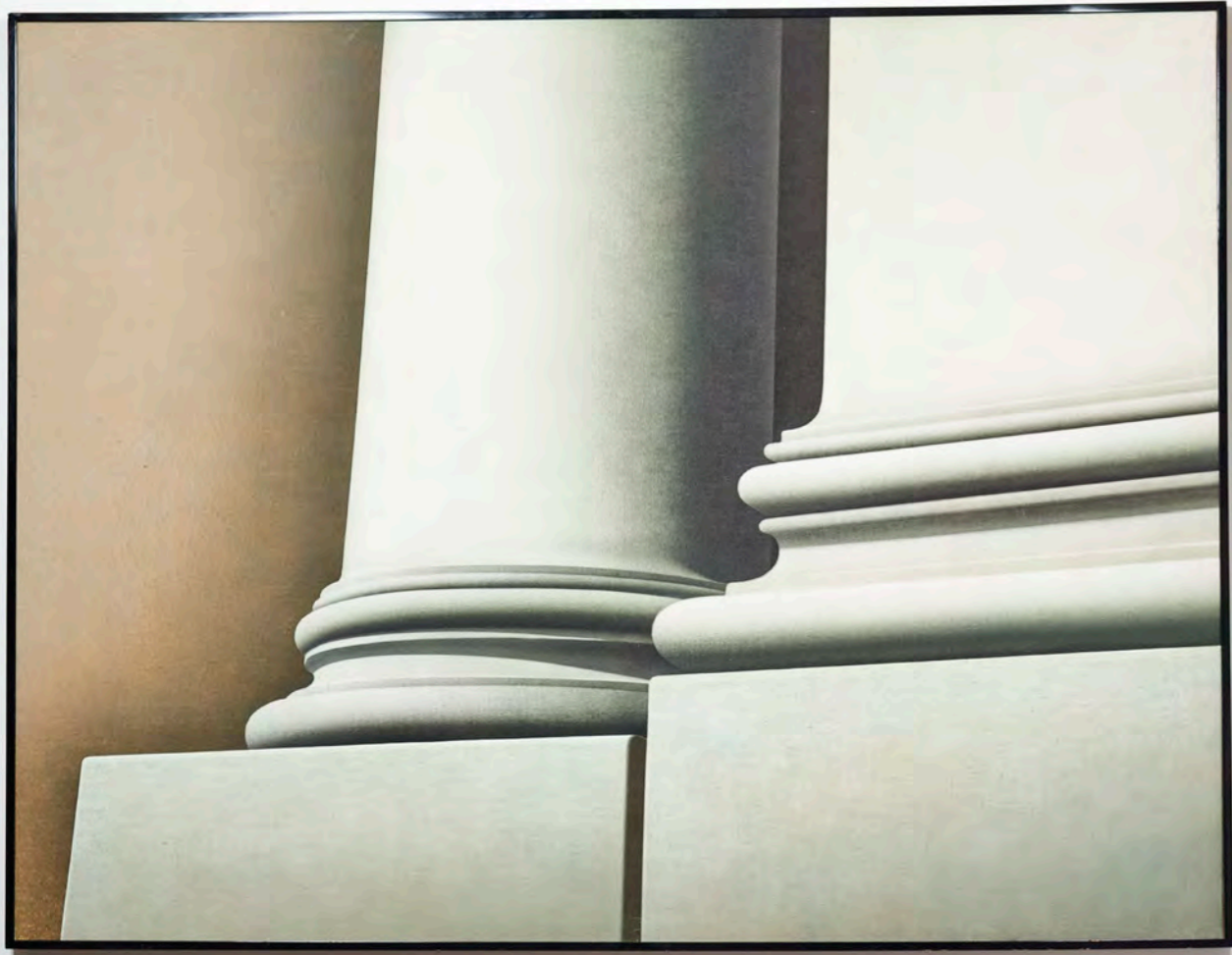
**EUGENIO ESCUDERO (ARGENTINA, 20TH CENTURY)**

Circa 1970

A pair of screens with geometric structure in teak plywood forming a trellis on a gold lacquered background, the reverse white lacquered

H: 245 x W: 76 cm (each panel)

€4.000-6.000



**165**  
**EDOUARDO OLIVEIRA CESAR (1942-2006)**

*Two columns*  
Oil on canvas  
Signed at the back  
H: 152 x W: 198 cm

€1.000-1.500

**166**  
**PAUL DUPRE-LAFON & HERMES (1900-1971)**

Circa 1930  
A pair of X shaped serused oak stools, the red leather seats with saddle stitching, the cylindrical stretchers with circular bronze plaques and parchment squares  
H: 33 x W: 56,5 x D: 38,5 cm

Provenance: Private Collection, Paris  
Literature: Thierry Couvrat-Desvergnès, "*Dupré-Lafon, décorateur des millionnaires*", Richer, éditions de l'amateur, Paris, 1990, a similar exemple reproduced in situ in a original photograph p.189.

We would like to thank the beneficiaries of the artist for confirming the authenticity of this lot. A nominative certificate of authenticity will be given to the buyer if requested.

€30.000-40.000



**167**  
**A CARVED OAK FIGURE OF A LION**  
Flanders, circa 1700  
Holding a shield  
H: 44,5 cm  
  
€4.000-6.000

**168**  
**A SILVER ANGEL RELIQUARY**  
19th century  
With glass cabochons  
H: 10,7 cm

€800-1.200



**169**  
**A POLYCHROME AND PARTIALLY-GILDED OAK ALTARPIECE ELEMENT**  
Depicting a high priest  
Antwerp, 16th century  
The top with Antwerp's hallmark's hand  
H: 30 cm  
  
€3.000-5.000



◆ **170**  
**IVORY MADONNA & CHILD**  
A carved ivory group of the Madonna and Child  
Paris, circa 1340  
H: 10 cm  
  
Provenance:  
- Old Monaco Collection  
- Gabriels Collection, the Netherlands  
  
€10.000-15.000





**171**  
**A POLYCHROME CARVED WALNUT FIGURE OF ST CRÉPIN**

Northern France, first half of the 16th century  
H: 52,5 cm

€3.000-5.000



**172**  
**A CARVED OAK ALTARPIECE ELEMENT DEPICTING THE ENTOMBMENT**

Northern France or Flanders, 16th century  
Christ supported by Nicodemus and Joseph of Arimathea  
H: 42 cm x W: 36 cm

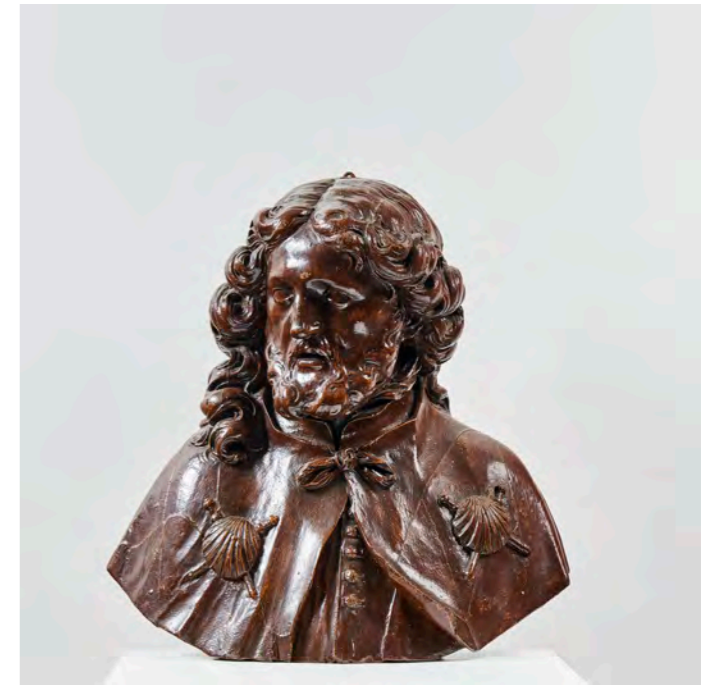
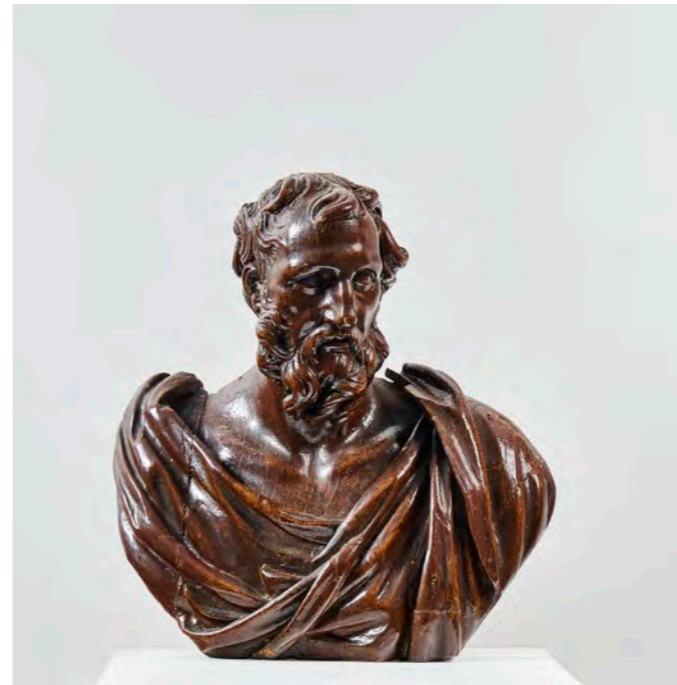
€2.000-3.000



**173**  
**A POLYCHROME AND CARVED WOOD FIGURE OF SAINT CATHERINE OF ALEXANDRIA**

16th century  
Standing on the head of Emperor Maximilian, the wheel of his martyrdom leaning against his leg  
H: 111 cm

€15.000-20.000



**174**  
**WORKSHOP OF PETER (BEFORE 1570-1636) AND JEAN DE NOLE (BEFORE 1570-1624)**

First third of the 17th century  
A set of four carved oak busts of the apostles, including Saint James  
H: 56 cm

Provenance: Château de Beaulieu, Havré, Belgium

€15.000-20.000



**175**  
**BLUE, YELLOW AND RED STAINED-GLASS**  
**PANNEL**

Depicting the Cruciferous Lamb  
Flanders, 14th century  
H: 50 x W: 51 cm

€8.000-10.000

**176**  
**PETER KLASSEN (BORN IN 1935)**

*CS 801*, 1989  
Mixed media (plastic, metal, wood and electrical wires)  
on panel  
H: 136 x W: 102 cm

Provenance: Galerie Fanny Guillon-Laffaille, Paris

Exhibited: Paris, Galerie Fanny Guillon-Laffaille, Peter  
Klassen, Histoire de Lieux Ordinaires, octobre-décembre  
1989, n°30

€5.000-7.000





**177**  
**A BRONZE-MOUNTED ROSEWOOD CASKET**  
 Holland, 18th century  
 The drop front revealing an interior with drawers and secret compartments  
 H: 18,5 x W: 29,5 x D: 18 cm

€3.500-5.000

**178**  
**A GLAZED-STONEWARE PITCHER**  
 Raeren, late 16th century  
 With the Abos family coat-of-arms, possibly made for Pierre d'Abos (d.1522) and married to Anne de Théméricourt  
 H: 28 cm

€2.600-3.000



**179**  
**TWO WOOD AND STAINED BONE BARGUENO DOORS**  
 Iberian Peninsula, 17th century  
 Reassembled to form a corner cabinet  
 H: 23,5 x W: 47,5 cm

€300-500



**180**  
**JEAN KAPERA (1924-1986)**  
*Etoile-soleils*  
 Gilt and embossed flank presses  
 H: 55 x W: 47 cm

€400-600



**181**  
**A SMALL EBONY AND ENGRAVED-COPPER CABINET**

Flanders, second half of the 17th century  
Opening with two doors, the interior with seven drawers  
H: 21 x W: 13,5 x D: 21 cm

€3.500-5.000

**182**  
**A RECTANGULAR CAST-IRON CASKET**

Berlin, first quarter of the 19th century  
H: 19,5 cm

€600-800



**183**  
**A RARE GRAY SANDSTONE AND BLUE ENAMEL PITCHER WITH A TIN LID**

Raeren, Jan Emens Mennicken (1540 – 1594), last quarter of the 16th century  
With an HP monogram and the potter's brand IX\*M.  
H: 28 cm

€2.200-2.500



**184**  
**JAN BAPTIST WEENIX (1621 - 1660)**

Pastoral scene in front of ancient ruins  
Oil on canvas  
H: 138 x W: 182 cm

Provenance: Family della Faille de Leverghem, Mick's castle, near Antwerp

€8.000-12.000



**185**  
**CARLO BUGATTI (1856-1940)**  
Curule throne, circa 1900  
Walnut, vellum, copper, tin and ornamental trimmings  
H: 170 x W: 80 x D: 71 cm

Provenance: Important Parisian collection

€15.000-20.000



**186**  
**A HARD STONE MARQUETRY**  
**FRAME**  
Rome, first of the quarter of the 17th  
century  
With agate and lapis lazuli, gold  
highlights, in a blackened wood frame  
H: 39,8 x W: 33,5 cm

€3.000-5.000



**187**  
**CESAR (1921-1998)**  
*Compression*, 1970  
Compressed tin sculpture  
Signed on the side

H: 35.5 x W: 20 x D: 7 cm

Provenance:  
- Fred Lanzenberg Gallery, Brussels  
- Acquired from this gallery by the current owner in 1974

A certificate from the Denyse Durand-Ruel archives with the number 1038  
will be given to the buyer

€10.000-15.000





**188**  
**A PAIR OF GILT-BRONZE MEDICIS VASES**  
England, 19th century  
With two handles on a pedestal, applied with floral  
decoration, centred with cartouches for coats-of-arms  
H: 32 cm

€4.000-6.000



**189**  
**A PORCELAIN TONDO PAINTED WITH A  
HEAD OF BACCHUS**  
19th century  
D: 29,5 cm

€800-1.200





**190**  
**A LARGE BRONZE CANDLE HOLDER**  
Flanders or Netherlands, circa 1500  
H: 39,5 cm

€2.000-3.000

**191**  
**ATTRIBUTED TO GIOVANNI BONAZZA**  
**(VENICE 1654 – PADUA 1736)**  
Venice, early 18th century A pair of brown-patinated  
bronzes figures of river gods  
Each on a perspex base  
H: 21,5 x W: 32,5 cm

€8.000-12.000



**192**  
**A SILVER-MOUNTED ROCK CRYSTAL**  
**CANDLE HOLDER**  
Northern Italy, 17th century  
H: 25 cm

€2.000-3.000







**193**  
**A CARVED OAK ALTARPIECE ELEMENT**  
 Depicting the Descent from the Cross  
 Antwerp, 16th century  
 H: 42,5 x W: 39 cm

€5.000-7.000

**194**  
**A CARVED WALNUT CABINET**  
 Spain, 18th century  
 With gold highlights and a red lacquered interior  
 H: 230 x W: 115 x D:78 cm

€1.000-1.500



**195**  
**WORKSHOP OF PETER (BEFORE 1570-1636)**  
**AND JEAN DE NOLE (BEFORE 1570-1624)**  
 First third of the 17th century  
 A pair of oak solomonic columns  
 H: 160 cm

Provenance: Château de Beaulieu, Havré, Belgium

€800-1.200



**197**  
**WORKSHOP OF PETER (BEFORE 1570-1636)**  
**AND JEAN DE NOLE (BEFORE 1570-1624)**  
 First third of the 17th century  
 An oak bust of a saint  
 H: 86 cm

Provenance: Château de Beaulieu, Havré, Belgium

€4.000-6.000



**196**  
**WORKSHOP OF PETER (BEFORE 1570-1636)**  
**AND JEAN DE NOLE (BEFORE 1570-1624)**  
 First third of the 17th century  
 An oak bust of an ecclesiastical saint  
 H: 78 cm

Provenance: Château de Beaulieu, Havré, Belgium

€4.000-6.000



**198**  
**WORKSHOP OF PETER (BEFORE 1570-1636)**  
**AND JEAN DE NOLE (BEFORE 1570-1624)**  
 First third of the 17th century  
 An oak bust of an ecclesiastical saint  
 H: 81 cm

Provenance: Château de Beaulieu, Havré, Belgium

€4.000-6.000



**199**  
**A WROUGHT-IRON NECKLINE ELEMENT**  
 Nuremberg, early 16th century  
 With leather straps, one engraved with a pine cone  
 W: 33,5 x D: 26,7 cm

€1.200-1.500



**202**  
**A SMALL BRONZE COMPASS**  
 Nuremberg, late 17th century  
 With pine cone hallmark  
 W: 10,2 cm

€500-700

**200**  
**A MEDIEVAL STYLE SILVERGILT HANAP**  
 Mexico, early 20th century  
 H: 20,5 cm

€2.000-3.000



**203**  
**AN EBONY AND IVORY CABINET**  
 Southern Germany, late 17th century  
 With nine drawers and a central door  
 H: 55 x W: 66 x D: 38 cm  
 On a later base  
 H: 80 x W: 80 x D: 45 cm

€5.000-7.000



**201**  
**A BRASS EWER WITH SPOUT**  
 Tuscany, circa 1600  
 H: 42,5 cm

€800-1.200



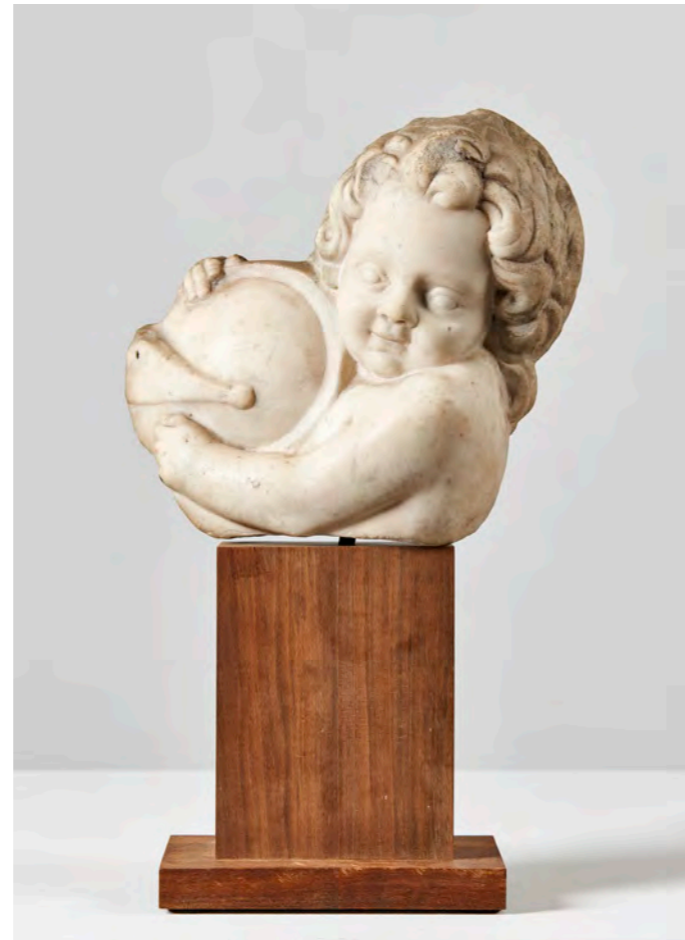
**204**  
**A CHISELED BRONZE ESTOC TIP**  
 Italy, 13th/14th century  
 H: 2,4 cm

€400-600



**205**  
**A BRONZE GROUP OF HERACLES AND THE NEMEAN LION**  
 Germany, 17th century  
 H: 10,5 cm

€1.500-2.000



**207**  
**A BRONZE FIGURE OF CHRIST**  
 Italy, early 17th century, after a model by Guglielmo Della Porta  
 On a perspex base  
 H: 25,5 cm

€1.500-2.000

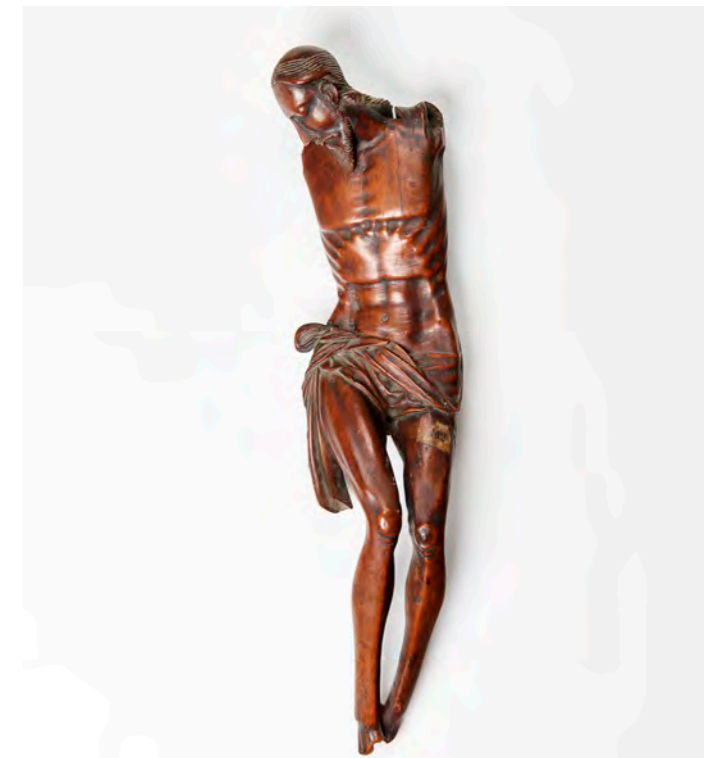


**208**  
**WORKSHOP OF PETER (BEFORE 1570-1636) AND JEAN DE NOLE (BEFORE 1570-1624)**

First third of the 17th century  
 Two oak baluster vases decorative elements  
 H: 98 cm

Provenance: Château de Beaulieu, Havré, Belgium

€2.000-3.000



**209**  
**A CARVED BOXWOOD FIGURE OF CHRIST**

Middle Rhine, circa 1500  
 H: 35,5 cm

€1.000-1.500

**206**  
**A MARBLE SCULPTURE OF AN ANGEL HOLDING A HELMET**  
 Flanders, late 17th century  
 H: 21 cm

€1.600-2.000



**210**  
**EDOUARDO OLIVEIRA CESAR (1942-2006)**

*One column*  
Oil on canvas  
Signed at the back  
H: 137 x W: 153 cm

€1.000-1.500

◆ **211**  
**JACQUES-EMILE RUHLMANN (1878-1933)**

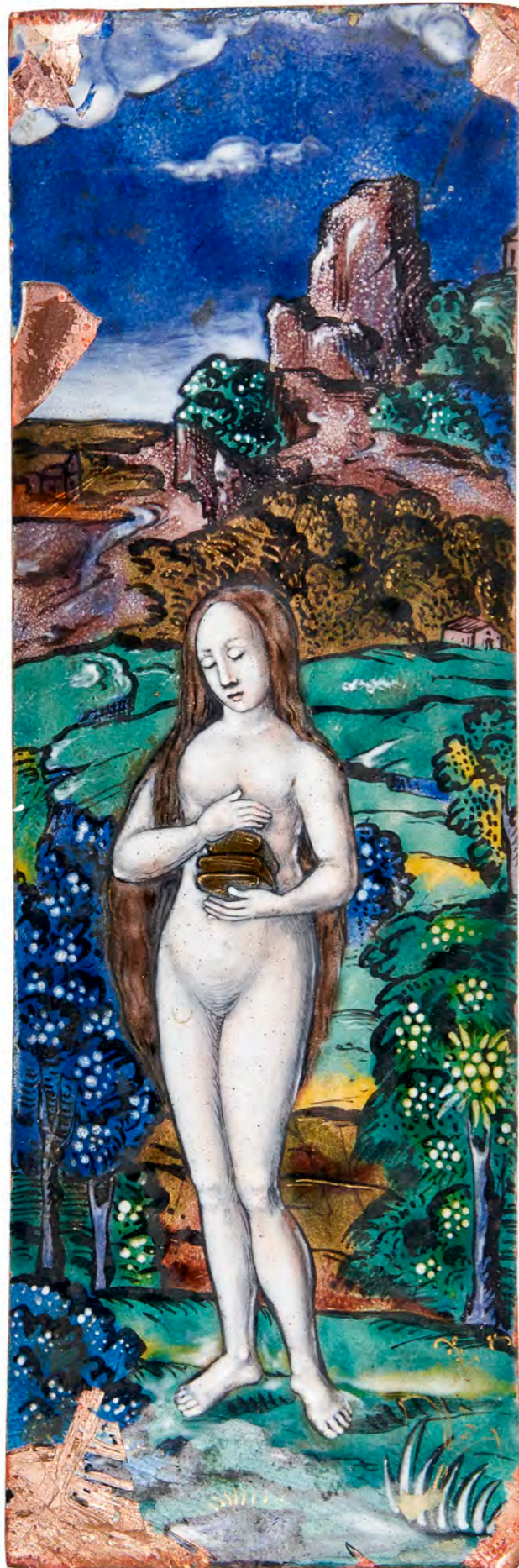
Meridienne - sofa, model 509 AR-514NR of the artist's reference, c. 1925, in rosewood veneer inlaid with ivory fillets. Curved headboard and footboard decorated with ivory lozenges resting on a slightly recessed full scroll. Cushion and mattress entirely covered with cream fabric  
Stamped in two places  
H: 69 x L: 185 x D: 75 cm

History: the archive drawing of our sofa bed is kept in the archives of the Museum of the 1930s in Boulogne, under the number 509 AR

Literature: Florence Camard, Ruhlmann, éditions Monelle Hayot, Paris, 2009, drawing of our model referenced and reproduced on the CD accompanying the book

€18.000-20.000

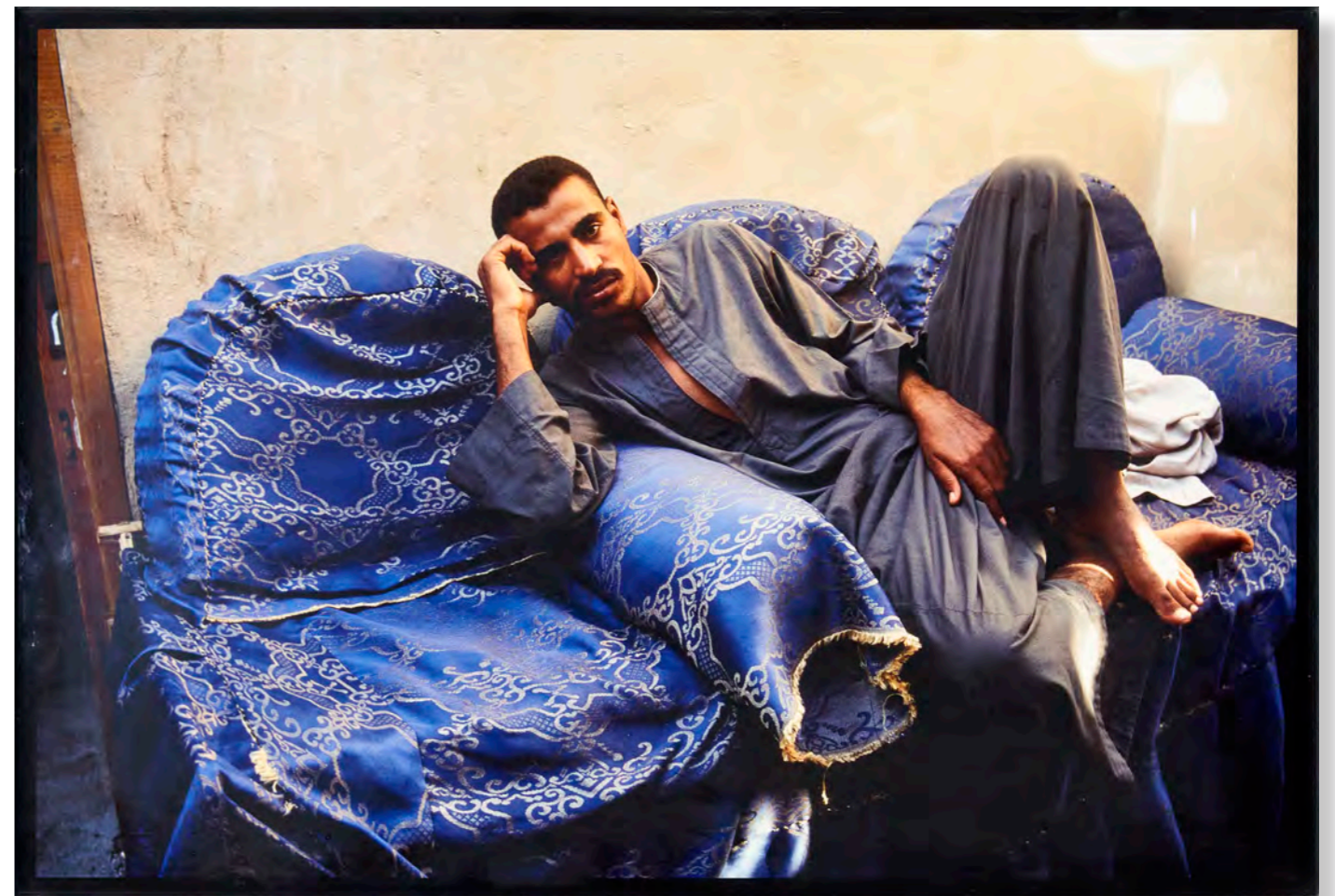




**212**  
**A RENAISSANCE STYLE ENAMELLED AND  
POLYCHROMED COPPER PLATE**

19th century  
Depicting Mary the Egyptian, with salmon-colored  
counter-enamel  
H: 18 x W: 6 cm

€250-300

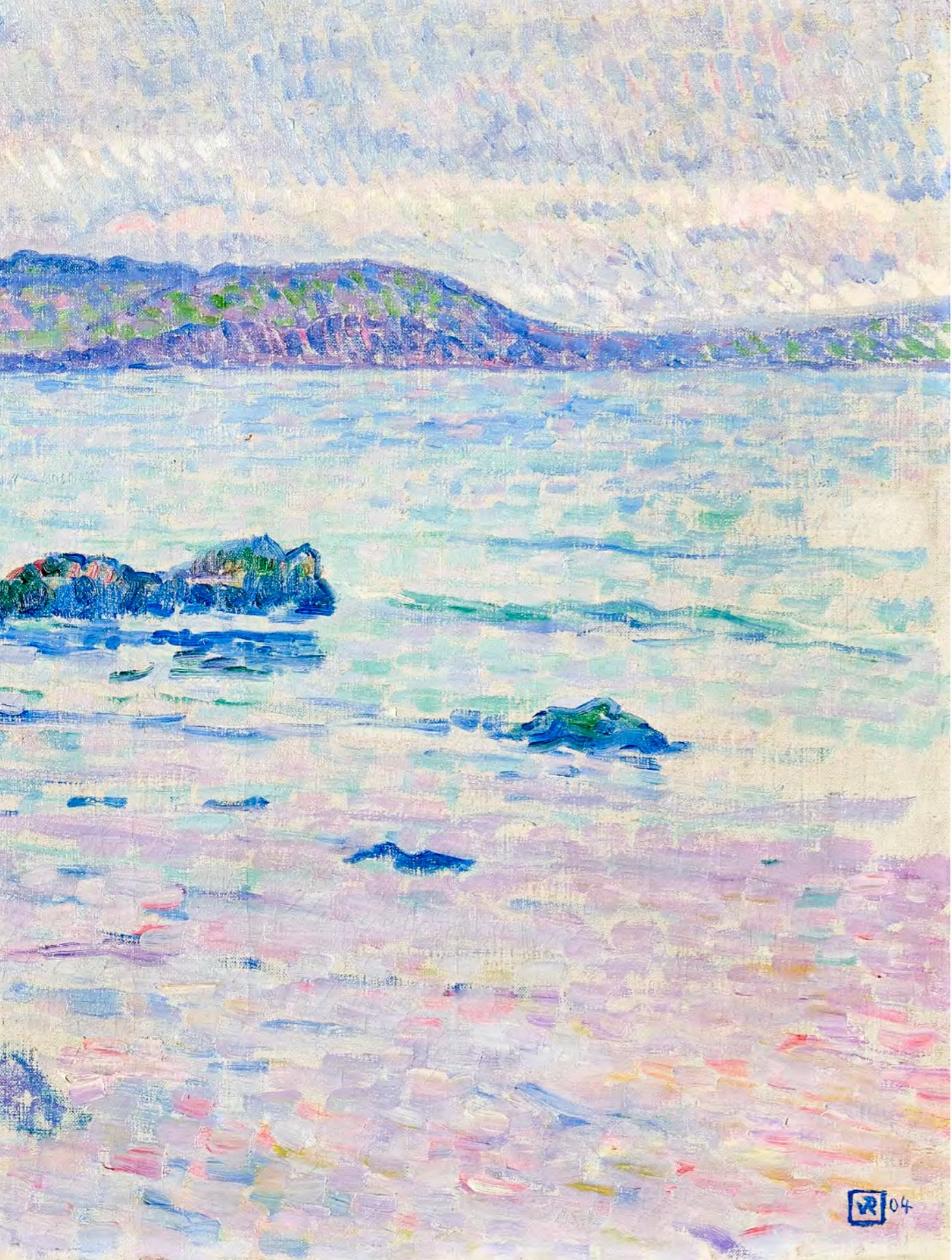


**213**  
**NAN GOLDIN (BORN IN 1953)**

Jubalowe looking at me, Luxor, 2003  
Cibachrome  
Ed. 3/15  
Signed, dated, titled and numbered at the back  
H: 70 x W: 101,5 cm

Provenance: Galerie Yvon Lambert, Paris

€4.000-6.000



**214**  
**THEO VAN RYSSELBERGHE (1862-1926)**

*Marine (Mortgat)*, 1904

Oil on canvas

Monogrammed and dated on the lower right

H: 46,5 x W: 55,5 cm

Provenance:

- Me Blache, Hôtel de vente rue Rameau, Versailles, 3 Dec. 1967
- Auction Lombrail, Champin, Gauthier, Enghein-les-Bains, 21 Jun. 1990, n°34
- Le Hoelleur, Deauville, 16 Aug. 1991, n°124
- Keitelman Gallery, Brussels, 1993

Literature: R. Feltkamp, *Catalogue Raisonné*, Editions Racine, Bruxelles, 2003, ill. n° 023, p. 347

€80.000-120.000



**215**  
**CARLO SCARPA FOR VENINI**  
 Italy, circa 1960  
 Pair of glass wall lights with metallic structure and modular diffusers from the Poliedri series in Murano glass  
 H: 45 x W: 45 x D: 20 cm

€2.000-3.000

**216**  
**ROBERT CAHAY (1951)**  
*Rêve d'artiste*  
 Mixed media  
 Signed and titled on the back  
 H: 40,5 x W: 30,4 cm

€300-500

**217**  
**CHAYAN KHOI (1963)**  
*Egypt Engloutie, 1990*  
 Photography and aircraft parts  
 Ed 32/50  
 H: 262 x W: 265 cm

€1.500-2.000





**218**  
**GEORGES LEMMEN (1865-1916)**  
*Jeune femme*, circa 1890  
Oil on board  
Monogrammed on the lower right  
H: 59 x W: 43 cm

€8.000-12.000

**219**  
**GEORGES LEMMEN (1865-1916)**  
*La cueillette II*, 1906  
Oil on canvas  
Monogrammed et dated on the lower right  
H: 61,5 x W: 50,5 cm

Exhibited: Bruxelles, Musée d'Ixelles, Georges Lemmen, 1997, n°148

€40.000-60.000





**220**  
**A POLYCHROM DECORATED OVAL**  
**PORCELAIN ARMORIAL DISH**  
China, 18th century  
H: 28 x W: 34 cm

€1.500-2.000



**221**  
**BRONZE FUNERARY BLADE**  
Flanders, late 15th century  
Part of an engraved and cut-out bronze funerary blade  
H: 40 x W: 26,5 cm

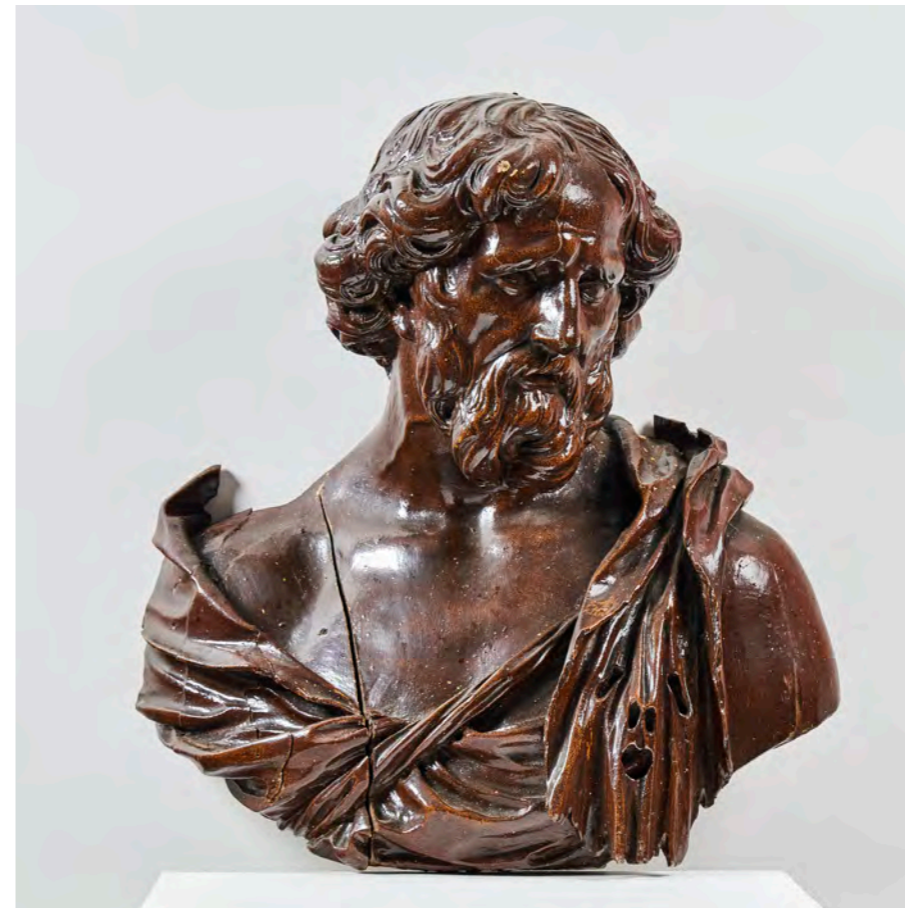
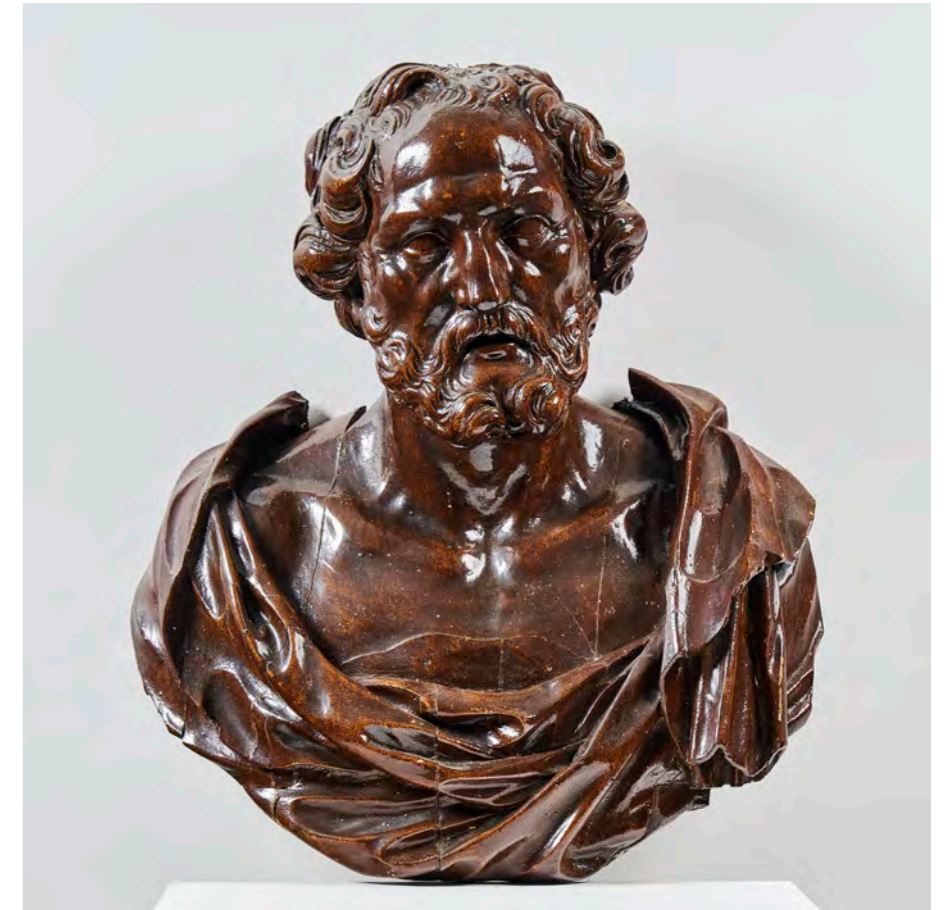
Provenance: Jacques & Galila Hollander Collection

€800-1.200

**222**  
**WORKSHOP OF PETER (BEFORE 1570-1636) AND JEAN DE NOLE (BEFORE 1570-1624)**  
First third of the 17th century  
A set of two carved oak busts of evangelists, st peter and possibly st paul  
H: 70 cm

Provenance: Château de Beaulieu, Havré, Belgium

€10.000-15.000





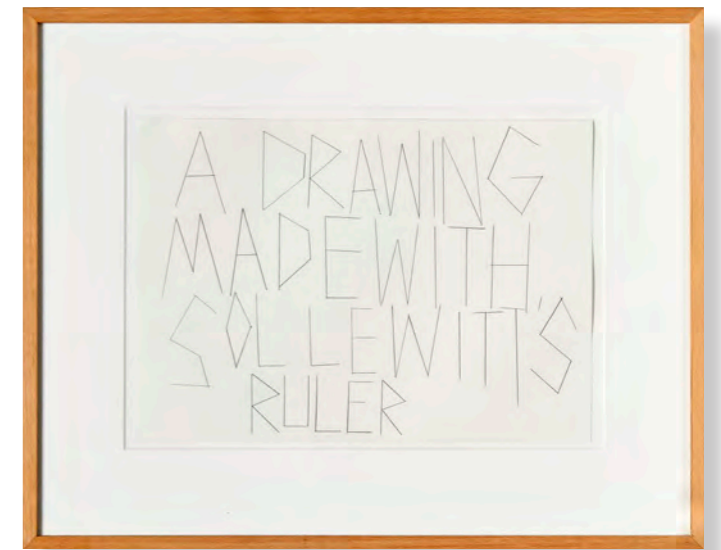
**223**  
**MARTIN ZELLER (BORN IN 1961)**  
*Rauthausstrape, Berlin, 1997*  
 Photo  
 Ed 1/5  
 H: 46 x W: 59 cm

€1.000-1.500

**224**  
**JONATHAN MONK (BORN IN 1969)**  
*A drawing made with Sol Lewitt's ruler, 2001*  
 Pencil on paper  
 Signed, dated et titled at the back  
 H: 21 x W: 29,5 cm

Provenance: Galerie Yvon Lambert, Paris

€400-600



**225**  
**TWO EXPORT SILVER BOXES**  
 China, late 19th century  
 Of rectangular section with drop-lid, decorated in the *repoussé* technique with dragons chasing a flaming pearl  
 H: 5,5 x W: 28 x D: 17 cm  
 H: 4 x W: 17 x D: 11 cm

€800-1.200

**226**  
**MICHELLE CHIECCHIO (BORN IN 1956)**  
*Composition n° 44, 2012*  
 Sepia ink and pearly pink ink on paper  
 Signed on the lower right  
 H: 30 x W: 24 cm

€300-500





**227**  
**A MAGNIFICENT SET OF SEVEN PAINTED PAPER PANELS**  
 China, late 18th/early 19th century  
 Decorated all over with figures in animated landscapes, surrounded by birds and blossoming trees; framed  
 €25.000-35.000

H: 212 cm W: 85,5 cm x 4 panel  
 H: 212 x W: 150 cm  
 H: 212 x W: 152,5 cm  
 H: 212 x W: 153,5 cm





**228**  
**ADRIAN HERMANIDES (BORN IN 1972)**

*Pearl*, 2008  
Light jet print mounted on aluminium  
Ed 1/3  
H: 205 cm x W: 105 cm

Provenance: galerie5213, Berlin

€1.000-1.500

**229**  
**WU MINGZHONG (1963-2019)**

*Young girl strolling on a sidewalk in Tiananmen Square*, 2010  
Oil on canvas  
Signed and dated on the back  
H: 230 x W: 115 cm

€20.000-30.000





230

**JEAN KAPERA (1924-1986)**

*Il l'obligeait à ramper nue devant lui*

Wall relief

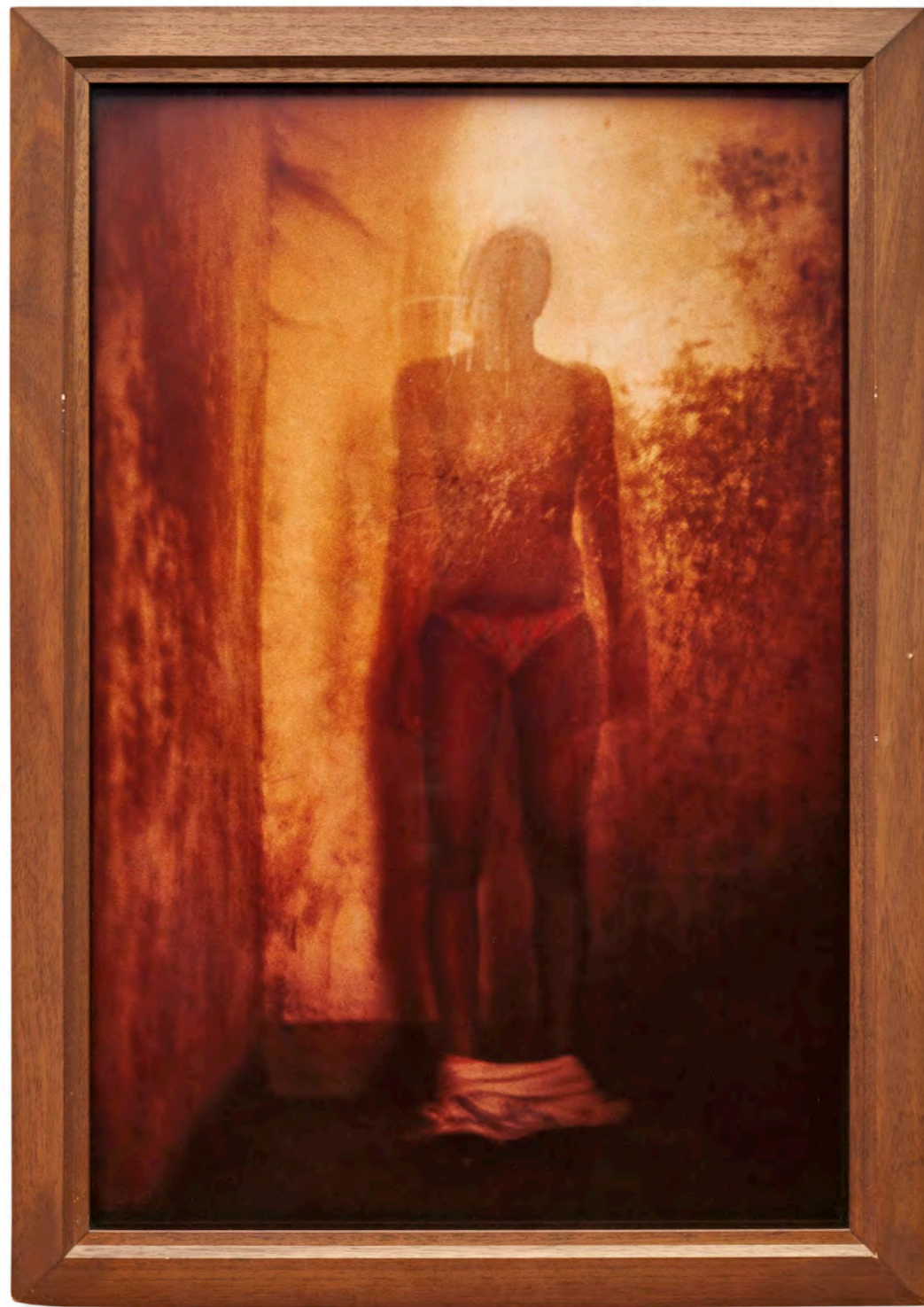
Gilt and embossed flank presses

H: 46 x W: 120 cm

Exhibited: Musée d' Art Moderne et Contemporain, Nice: "Jean Kapéra, La Plastique des Médias", décembre 1993-february 1994

Literature: Musée d' Art Moderne et Contemporain, Nice: "Jean Kapéra, La Plastique des Médias", décembre 1993-february 1994, no 33, texts by Pierre Chaigneau and Kapéra

€600-800



**231**  
**RIO BRANCO (BORN IN 1946)**

*Leninha Vanishing*, 1979  
 Cibachrome print  
 Signed, titled and numbered  
 H: 100 cm x W: 39 cm

Provenance: Galerie 1900-2000 Paris

€1.500-2.000



**232**  
**A CHAMPLEVÉ AND ENGRAVED-COPPER BINDING PLATE**

Rheno-mosan, 12th century  
 Depicting Christ, the Virgin Mary and St John, inscribed in Latin and Greek, IH[SUS]NAZAREN AO VS (Jesus of Nazareth, Alpha and Omega) for the titulus, I[N]CRUCE NOS CVRAT SVPPLEX CRVX ISTA FIGVERAT (saves us on the cross by his intercession) on each side of the cross, Alpha and Omega engraved to the reverse  
 H: 11,4 x W: 11,5 cm

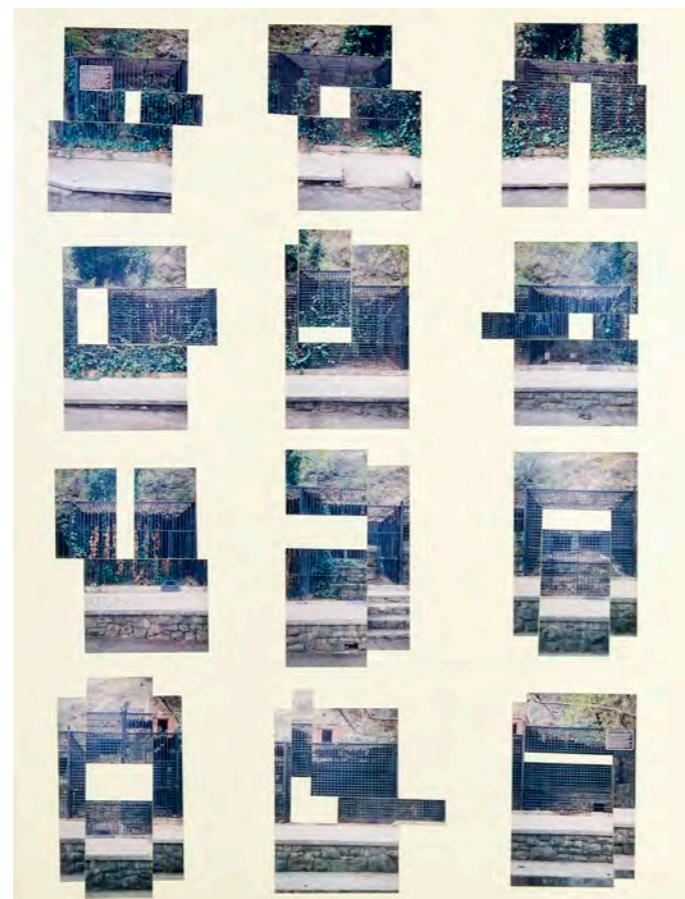
€7.000-9.000



**233**  
**CONSTANT PERMEKE (1886-1952)**

*Nu*  
Charcoal and brin pencil on paper  
Signed at the lower center  
H: 77 x W: 62 cm

€2.000-3.000



**234**  
**TORBJORN VEJVI (BORN IN 1972)**

*Study for a film, 2004*  
Photo collage on paper  
H: 57 x W: 76,3 cm

€800-1.200



A N C I E N N E  
**NONCIATURE**

Un cadre de prestige pour vos événements artistiques, professionnels, privés.  
L'Ancienne Nonciature Place du Grand Sablon Bruxelles [www.nonciature.com](http://www.nonciature.com)

## CONDITIONS OF SALE

### THE SALE WILL BE CONDUCTED IN EUROS AND IS AN ALL-CASH SALE.

The buyers will pay the following buyer's premium in addition to the hammer price: up to and including 150.000€, 30% VAT included (sales costs and VAT included) and 25% VAT included (sales costs and VAT included) on the part of the hammer price over €150,000. This calculation applies per lot. For lots coming from outside the European Union, import VAT must be added:

For lots with numbers preceded by \*: an additional VAT of 6% of the hammer price.

For lots with numbers preceded by \*\*: an additional VAT of 21% of the hammer price.

Payment must be made immediately after the sale. This applies even if the buyer wishes to export the lot or if an export licence is required.

The buyer can pay by bank transfer in Euros to ANTENOR AUCTION's bank account:

**IBAN: BE93 0018 9140 0067**  
**BIC: GEBABEBB**

Or by credit card Visa or MasterCard as well as in cash in euros up to an amount of less than € 3.000 including fees and taxes.

Purchasers who have acquired their lot(s) through an online sales platform will pay in addition :

- **1.5%** (excluding VAT) of the hammer price if they have used the services of Drouot Digital Live.

- **5%** (excluding VAT) of the hammer price if they have used the services of Invaluable.

These sums are paid to the platform offering the Live service.

### RESPONSIBILITIES

The information contained in the catalogues, advertisements, brochures or any other written material issued by Antenor Auction must be considered as simple indications which do not engage its responsibility in any way. ANTENOR AUCTION does not guarantee the correctness of a statement concerning the author, the origin, the date, the age, the attribution, the provenance, the weight, the dimensions or the material condition of the lot. No employee is authorised to make any guarantees in this respect. Consequently, buyers must assure themselves before the sale as to the nature of the lots and their physical condition. Detailed information on the condition of the lots described by the experts and the auction house is available to buyers on request. ANTENOR AUCTION gives no warranty that any clock, pendula or watches and their mechanisms are in good working order.

### BIDS

Bids are placed in the order of the catalogue numbers. ANTENOR AUCTION is free to determine the order of bidding and bidders are obliged to comply with this. The highest and last bidder will be the successful bidder. In the event of a double bid recognized by ANTENOR AUCTION, the item will be reoffered for sale, with all

bidders present being able to participate in the second auction.

### PURCHASE ORDERS AND TELEPHONE/ONLINE BIDDING

All bidders who wish to make a written bid or bid by telephone must use the form provided for this purpose. This form must be received by ANTENOR AUCTION at the latest one day before the auction, together with the personal details of the bidder. Only written or telephone bids are a free service for clients who are unable to attend. ANTENOR AUCTION cannot be held responsible for internet and/or telephone connection problems.

### COLLECTION OF PURCHASES

Upon adjudication, the lot will be under the full responsibility of the buyer. The buyer is responsible for insurance of the lot and ANTENOR AUCTION declines all responsibility for any damage that the lot may suffer, as soon as the purchase is made. All formalities, in particular those concerning export, as well as transport remain the exclusive responsibility of the buyer.

Sale in Brussels, Ancienne Nonciature:

Storage costs will be covered free of charge by Antenor for a period of 15 days from the date of the sale. The works will be available three days after the sale by appointment at the following address:

### IAT Solution

136 rue Saint-Denis  
1190 Forest - Belgium  
Phone: +32 (0)4 95 65 00 05  
Mail: infoart@itransart.com

Lots can be collected between the 3<sup>rd</sup> and 15<sup>th</sup> working days after the sale without additional costs. After this period, storage fees will have to be paid to IAT Solution in the amount of 5€/day/lot or 10€/day/lot for furniture, large paintings and large mirrors per client. The successful bidder who wishes to withdraw the purchased lot from the warehouse must inform IAT Solutions 48 hours in advance so that ANTENOR AUCTION can authorise the warehouse to deliver the goods. The buyer accepts that if he does not withdraw his lot within one year from the date of the auction, ANTENOR AUCTION can put it back up for auction and deduct the storage costs as described above, as well as the vendor's sale cost, from the sale price due to its owner. The balance will be kept in an escrow account and made available to the buyer. Collection of the purchased lot is by appointment only and on presentation of the proof of payment issued by ANTENOR AUCTION.

### ARTIST'S RESALE RIGHT

For the auction of certain unique works, signed and numbered works and works produced in reasonable quantities, an artist's resale right is due to the author or his heirs, provided that the author has not been dead for more than 70 years. This artist's resale right is calculated on the hammer price before taxes, provided that it is at least €2.000. It amounts to : 4% from 2.000€ to 50.000€, 3% from 50.001€ to 200.000€, 1% from 200.001€ to 350.000€, 0.5% from 350.001€ to 500.000€ and 0.25% beyond that, without the artist's resale right exceeding 12.500€ per work of art and per resale. The buyer is responsible for paying this artist's resale right. ANTENOR AUCTION is legally bound to collect the sums due for the artist's resale right of the lots and to transfer them to the collecting institution. The buyer is responsible for the payment of the artist's resale right and will be invoiced at the same time as the hammer price and the buyer's premium. In the event that ANTENOR AUCTION is not aware that a sale is subject to the

artist's resale rights until after the lot has been sold, the buyer will be invoiced separately.

### EXPORT AND IMPORT

Any lot sold at auction may be subject to export laws from the country in which it is sold and import restrictions from other countries. Many countries require a declaration of export for any lot leaving the country and/or an import declaration on entry of property when the lot enters the country. Local laws may prevent you from importing or selling a lot in the country into which you wish to import it. ANTENOR AUCTION will not be obliged to cancel the sale or refund the buyer the purchase price if the lot cannot be exported, imported or is seized for any reason by a government authority. It is the buyer's responsibility to determine and meet any legislative or regulatory requirements relating to the export or import of any lot purchased.

Before bidding, it is the sole responsibility of the bidder to seek advice and comply with the requirements of any applicable laws or regulations relating to the import and export of any lot. If permission is refused or if it takes time to obtain permission, the bidder must still pay ANTENOR AUCTION in full for the lot purchased. In exceptional cases and at the buyer's request, ANTENOR AUCTION can assist the buyer in obtaining the appropriate permits if the buyer bears the costs. However, ANTENOR AUCTION cannot guarantee that these permits will be obtained.

The buyer is solely responsible for the payment of any taxes, duties, or other governmental charges relating to the export or import of the lot. If ANTENOR AUCTION exports or imports the item on behalf of the buyer, paying any taxes, duties or other governmental charges, the buyer agrees to reimburse ANTENOR AUCTION for such amounts.

Lots made from protected species: lots made from or comprising (in whatever percentage) endangered and other protected species of fauna and flora are marked with the symbol ♦ in the catalogue. These include, but are not limited to, ivory materials, turtle scales, crocodile skins, ostrich skins, certain species of coral and Brazilian rosewood. Buyers should check the relevant customs laws and regulations before bidding on any lot containing wildlife materials if they plan to import the lot into another country. Many countries refuse to import goods containing such materials, and others require permission from the relevant regulatory bodies in both the exporting and importing countries. In some cases, the lot can only be shipped with independent scientific confirmation of species and/or age, which the buyer will have to obtain at his own expense. If a lot contains elephant ivory, or any other wildlife material that could be mistaken for elephant ivory, the buyer should obtain other legal approval if they intend to import the lot into the United States. ANTENOR AUCTION will not be obligated to cancel or refund the purchase if the lot cannot be exported or imported or if it is seized for any reason by a government authority. It is the buyer's responsibility to determine what the requirements of applicable laws and regulations are with respect to the export and import of goods containing such protected or regulated materials, and it is also the buyer's responsibility to comply with them. U.S. Ban on African Elephant Ivory: The United States prohibits the import of African elephant ivory. Any lot containing elephant ivory or other wildlife material that could easily be mistaken for elephant ivory (e.g. mammoth or walrus ivory) may only be imported into the United States with the results of a rigorous scientific test accepted by Fish & Wildlife confirming that the material is

not African elephant ivory. If such rigorous scientific testing has been conducted on a lot prior to its release for auction, ANTENOR AUCTION will clearly indicate this in the lot description. In all other cases, ANTENOR AUCTION cannot confirm whether or not a lot contains African elephant ivory, and the buyer purchases the lot at his or her own risk and will be responsible for the cost of any scientific testing or other reports required for import into the United States. If said tests are inconclusive or confirm that the material is indeed African elephant, ANTENOR AUCTION will not be required to cancel the purchase or refund the hammer price and buyer's premium.

Antique jewellery: Under current laws, jewellery over 50 years old and worth at least 50.000€ will require an export licence, which ANTENOR AUCTION can help the buyer to apply for without any obligation of success. Obtaining this jewellery export licence can take up to 8 weeks.

Watches: Many of the watches offered for sale in this catalogue are photographed with bracelets made of materials from endangered or protected animal species such as alligator or crocodile. These lots are marked with the symbol ♦ in the catalogue. These bracelets made from endangered species are presented for display purposes only and are not for sale. ANTENOR AUCTION will remove and hold the bracelets before the watches are shipped. On some auction sites, ANTENOR AUCTION may, at its sole discretion, make these bracelets available free of charge to the buyers of the lots if they are collected in person at the auction site within 1 year from the date of the sale. The buyer will check with the department on the status of each particular lot. The import of luxury watches such as e.g. Rolex into the United States is subject to very tight restrictions. These watches cannot be shipped to the United States and can only be imported in person. As a general rule, a buyer can only import one watch at a time into the United States. For further information, the buyer should contact customs.

With respect to all symbols, lots marked with symbols are for information only, ANTENOR AUCTION declines all responsibility for errors or omissions.



**ALGEMENE  
VEILINGVOORWAARDEN**



**CONDITIONS  
GENERALES DE VENTE**



# ANTENOR AUCTION

## ORDRE D'ACHAT | KOOPORDER | BID FORM

VENTE AUX ENCHÈRES | VEILINGVERKOOP | AUCTION  
"ANTENOR III"  
BRUXELLES - BRUSSEL - BRUSSELS  
12-12-2021

DEMANDE D'ENCHÈRE TÉLÉPHONIQUE | AANVRAAG  
VAN TELEFOONLIJN | PHONE BID REQUEST

ORDRE D'ACHAT FERME | VAST BOD | ABSENTEE BID

NOM ET PRENOM | NAAM | NAME \_\_\_\_\_

ADRESSE | ADRES | ADDRESS \_\_\_\_\_

VILLE | STAD | CITY \_\_\_\_\_

PAYS | LAND | COUNTRY \_\_\_\_\_

E-MAIL \_\_\_\_\_

TELEPHONE | TELEFOON | PHONE \_\_\_\_\_

Après avoir pris connaissance des conditions de vente décrites dans le catalogue, je déclare les accepter et vous prie d'acquérir pour mon compte personnel aux limites indiquées en Euro, les lots que j'ai désignés ci-dessous. Frais et taxes en sus des enchères indiquées.

*Ik heb kennisgenomen van de verkoopvoorwaarden zoals omschreven in de catalogus en verklaar deze te aanvaarden. Hiermee verzoek ik u hieronder opgenomen loten te kopen voor mijn rekening met in Euro aangeduide limietprijzen zonder inbegrip van verkoopkosten en belastingen.*

I have read the conditions of sale and the guide to buyers printed in the catalogue and agree to abide by them. I grant you permission to purchase on my behalf the following items within the limits indicated in Euro. These limits do not include premium, fees and taxes.

Lot n°	Description   Beschrijving   Description	Limite   Limietprijs   Bidding limit €

La Maison de Ventes n'étant pas responsable de l'acheminement du courrier postal ou électronique, merci de vous assurer que votre ordre d'achat nous est correctement parvenu et confirmer par un mail de notre part. Les ordres d'achat doivent être reçus au moins 24 heures avant la vente. Aucune demande de ligne téléphonique ne sera prise en compte pour les lots ayant une estimation inférieure à 1.000€. Veuillez laisser pour ceux-ci des ordres fermes.

*Het veilinghuis kan niet verantwoordelijk gesteld worden voor post of mailverkeer. Gelieve u ervan te vergewissen dat uw kooporder ons correct toegekomen is en bevestig met een e-mail van ons. Verkooporders moeten minstens 24 uren voor de veiling ontvangen zijn. Telefoonaanvragen voor loten met een laagste schatting kleiner dan 1.000€ worden niet aanvaard. Gelieve een vast bod te plaatsen voor deze loten.*

The auction house is not responsible of postal-mail or electronic-mail, please, make sure we do receive your absentee bid before the auction and confirm with an email from us. To allow time for processing, absentee bids should be received at least 24 hours before the sale begins. Please note that only commission bids in writing will be accepted for lots estimated under 1.000€. Telephone bids will not be registered for these lots.

À renvoyer à | Te verzenden aan | send to : harold@antenor-auction.com ou | of | or 49, rue des Minimes, 1000 Bruxelles, Belgique.

Signature obligatoire | Handtekening vereist | Required signature :

Date | Datum | Date :